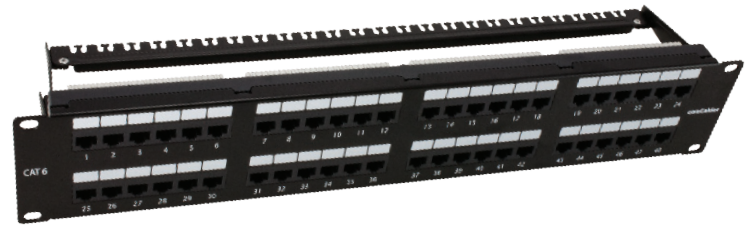


Cat 6 550 MHz 110 Style 48 Port Patch Panel

Part Number: PP-C6-48C

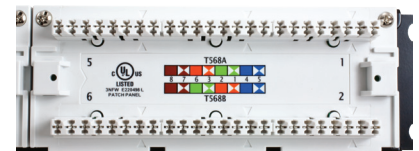


Dimensions

Depth	46.0 mm 1.81 in
Height	88.9 mm 3.5 in
Width	482.6 mm 19.0 in

Specification

Meets ANSI/TIA 568 C.2 ISO/IEC 11801
Class E Cat 6 Channel & Permanent Link Requirements



Electrical Specifications

Insulation Resistance	500MOhm min. @ 100Volc
Dielectric Withstanding Voltage	1000 Vac rms @ 60Hz for One Min
Current Rating	1.5Amps @ 68° F
Dielectric Withstand Voltage, RMS, Conductive Surface	1500 Vac @ 60 Hz
Dielectric Withstand Voltage, RMS, Contact-To-Contact	1000 Vac @ 60 Hz

Mechanical Specifications

Spring Wire Contact Resistance	20 MOhm Max
IDC Contact Resistance	2.5 MOhm Max Mechanical
Total Contact Force	>100Grams Per Contact Wire Lead
Retention	50N(11 lbf) for 60s ± 5s
Durability	750 Cycles Min.
Conductor Compatibility	20~24AWG
Conductor Gauge, Solid	22 AWG 24 AWG 26 AWG
Conductor Gauge, Stranded	22 AWG 24 AWG
Plug Insertion Life Test Plug	IEC 60603-7 Compliant Plug
Plug Insertion Life, Minimum	750 Times
Plug Retention Force, Minimum	30 lbf 133 N

Environmental Specifications

Storage Temperature	-40 °C to +70 °C (-40°F to + 158°F)
Operating Temperature	-10 °C to +60 °C (14°F to + 140°F)
Relative Humidity Operation	Max. Non condensing 93%

Construction Materials

Housing	High Impact Flame Retardant Plastic, UL 94 V- 0 Rated
PCB	FR4, 1.6mm Thickness
Spring Wire	Phosphor Bronze Alloy Plated w/50 Micro-inch of Gold Over 70 ~ 100 Micro-inch of Nickel
IDC	Phosphor Bronze Alloy Plated w/100 Micro-inch of Tin

