

FEATURES & SPECIFICATIONS

INTENDED USE — For wall or ceiling mounting - vertical or horizontal. Ideal for stairwells, corridors, lavatories or any utility application. **Certain airborne contaminants can diminish the integrity of acrylic and/or polycarbonate.** [Click here for Acrylic-Polycarbonate Compatibility table for suitable uses.](#)

CONSTRUCTION — Easy maintenance design for individual or tandem mounting. For row mounting, order RMT option.

Heavy-duty code grade steel. Metal parts are die-formed.

Finish: Five-stage iron-phosphate pretreatment ensures superior paint adhesion and rust resistance. Standard finish is high-gloss, high reflectivity, baked white polyester (architectural black available).

OPTICS — Available with high performance A12 pattern clear acrylic or low brightness matte white opal acrylic. Front metal fascia eliminates direct illumination. Provides up/down distribution.

ELECTRICAL — AWM, TFN or THHN wire used throughout, rated for required temperatures. UL/CSA Ballast disconnect provided where required to comply with US and Canadian codes.

INSTALLATION — End caps spring-loaded for easy diffuser removal.

LISTINGS — UL Listed to US and Canadian safety standards. Optional: Mexico NOM.

WARRANTY — 1-year limited warranty. Complete warranty terms located at:

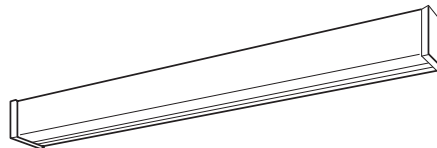
www.acuitybrands.com/CustomerResources/Terms_and_conditions.aspx

Actual performance may differ as a result of end-user environment and application.

Note: Specifications subject to change without notice.

Catalog Number
Notes
Type

Commercial Wall Bracket



WC

T5 and T8
2', 3' or 4' Lengths
1 or 2 Lamps



Specifications

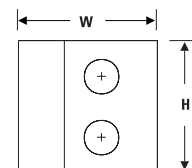
Length: 24 (609), 36 (914) or 48 (1218)

Width: 4-5/8 (118)

Depth: 4-9/16 (116)

Weight: 14 lbs (6.3 kg)

All dimensions are inches (millimeters) unless otherwise indicated.



ORDERING INFORMATION

For shortest lead times, configure product using **standard options (shown in bold)**.

Example: WC 2 32 120 MVOLT GEB10IS

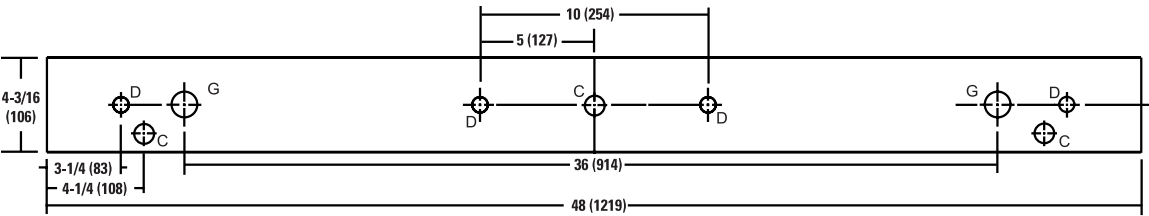
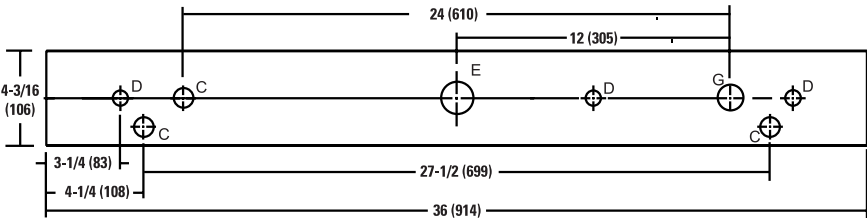
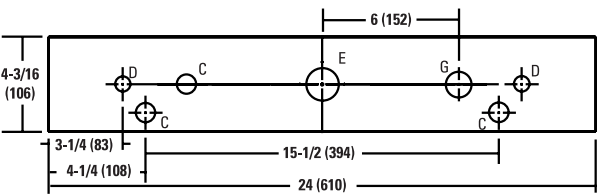
WC								
Series	Number of lamps	Lamp type		Diffuser type		Voltage	Options	
WC All purpose wall bracket	1	17	17W T8 (24")	(blank)	Matte white opal acrylic	120	CO Grounded convenience outlet, 120V only (bottom right) ¹	
	2	25	25W T8 (36")		A12	#12 pattern acrylic	277	S1 Pull-chain switch; installed bottom left; on/off operation of all lamps only (120V only) ¹
		32	32W T8 (48")		FAC	Matte white opal acrylic with front metal fascia	347	GEB10IS Electronic ballast, ≤ 10% THD, instant-start
		14T5	14W T5 (24")		FA12	#12 pattern acrylic with front metal fascia	MVOLT	
		21T5	21W T5 (36")					
		28T5	28W T5 (48")					
		24T5HO	24W T5HO (24")					
		39T5HO	39W T5HO (36")					
		54T5HO	54W T5HO (48")					
								MB Architectural black finish
								RMT Row mount ²
					CSA CSA Certified.			
					EL 300 nominal lumen battery pack (non-CEC compliant) ³			
					EL14 T20C 1400 nominal lumen battery pack, CEC compliant ³			

Notes

- For optional locations, consult factory.
- Includes continuous row joiner band. Not available with CSA; models requiring CSA labeling ship standard with joiner band. Cannot field install.
- Not available on 2ft.

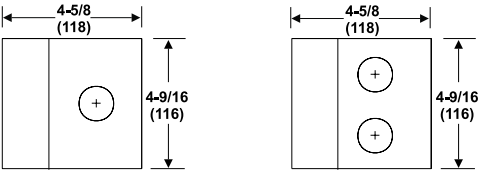
WC Wall Bracket, All Purpose

MOUNTING DATA



DIMENSIONS

All dimensions are inches (millimeters) unless otherwise indicated.



C = 7/8 (22) Dia. K.O.
D = 11/16 (18) Dia. K.O.
E = 2(51) Dia. K.O.
G = 1-1/8 (29) Dia. K.O.

PHOTOMETRICS

Calculated using the zonal cavity method in accordance with IESNA LM41 procedure. Vertical and horizontal illuminance is calculated with fixture mounting 7' above floor. Reflectances 80/50/20%. Full photometric data available upon request.

WC 2 32
Report LTL 5736
Initial point illuminance on wall and horizontal work surface (fc)
X and Y coordinates are on 12" centers.

	X	A	B	C	D	E	F	G	H	I	J	K
Vert.	9	3	4	6	11	15	16	15	11	6	4	4
	8	3	4	6	18	31	33	31	18	6	4	3
	7	2	3	3						3	3	2
	6	2	3	5	16	28	30	28	16	5	3	2
	5	2	2	4	6	8	9	8	6	4	3	2
	4	2	2	3	3	4	4	4	4	3	2	2
	3	2	2	2	3	3	3	3	3	2	2	2
	2	1	2	2	2	2	2	2	2	2	2	1
	1	1	2	2	2	2	2	2	2	2	2	1
	Y											
	1	6	7	8	9	10	10	10	9	8	6	5
	2	6	7	8	10	11	11	11	10	9	7	6
Horiz.	3	6	7	8	10	11	11	11	10	9	7	7
	4	7	7	8	10	11	11	11	10	9	8	7
	5	6	7	8	9	10	10	10	9	9	7	7
	6	6	7	7	9	9	9	9	8	7	6	5
	7	5	6	6	7	7	7	7	7	6	5	5
	8	5	5	6	6	7	7	7	6	6	5	5
	9	5	5	5	6	6	6	6	6	6	5	5
	10	4	4	4	4	5	5	5	4	4	4	4
	11	3	3	4	4	4	4	4	4	4	3	3
	12	3	3	3	4	4	4	4	4	4	3	3
	13	2	2	3	3	3	3	3	3	3	2	2

