



# T&S BRASS AND BRONZE WORKS, INC.

2 Saddleback Cove / P.O. Box 1088  
Travelers Rest, SC 29690

Model No.

**B-2282-01-F05**

Item No.

Travelers Rest, SC: 800-476-4103 • Simi Valley, CA: 800-423-0150 • Fax: 864-834-3518 • www.tsbrass.com

This Space for Architect/Engineer Approval

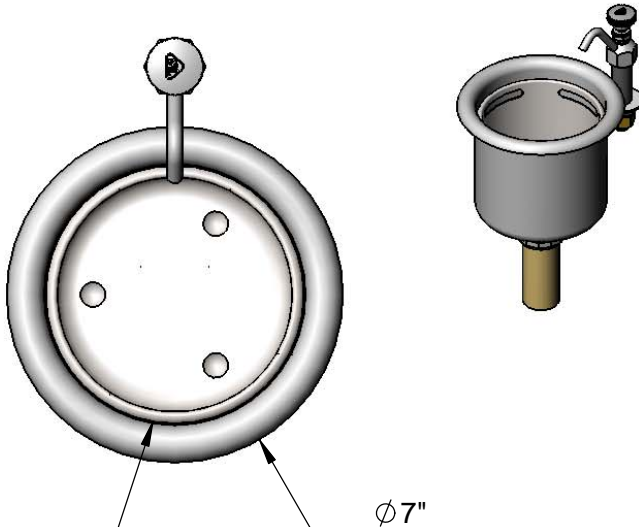
Job Name \_\_\_\_\_ Date \_\_\_\_\_

Model Specified \_\_\_\_\_ Quantity \_\_\_\_\_

Customer/Wholesaler \_\_\_\_\_

Contractor \_\_\_\_\_

Architect/Engineer \_\_\_\_\_



Removable Inner  
Overflow Cup

Ø7"  
[178mm]

Solid Brass Knob,  
Polish Chrome Plated

2 5/8"  
[67mm]  
Max. Open

2 5/16"  
[58mm]

Integral 0.5 GPM  
Flow Control

2"  
[51mm]  
Maximum  
Thickness

3 7/16"  
[87mm]

5/16" I.D. for  
Sweat Fitting or  
Remove Coupling  
for 1/2" NPSM  
Male Shank

5 1/4"  
[133mm]

9 7/8"  
[251mm]

Ø5 1/2"  
[140mm]

Ø1 1/2"  
[38mm]  
Brass Tube

4 3/4"  
[121mm]

Rough-In Requirement:  
Ø7/8" [22mm] for Faucet  
Ø5 3/4" [146mm] for Stainless Steel Bowl

Product Specifications:  
Dipperwell Faucet w/ Drain, Stainless Steel Bowl,  
Inner Overflow Cup & 0.5 GPM Flow Control

Drawn

DMH

Checked

KJG

Approved

JHB

Scale:

1:4

Date:

05/22/13



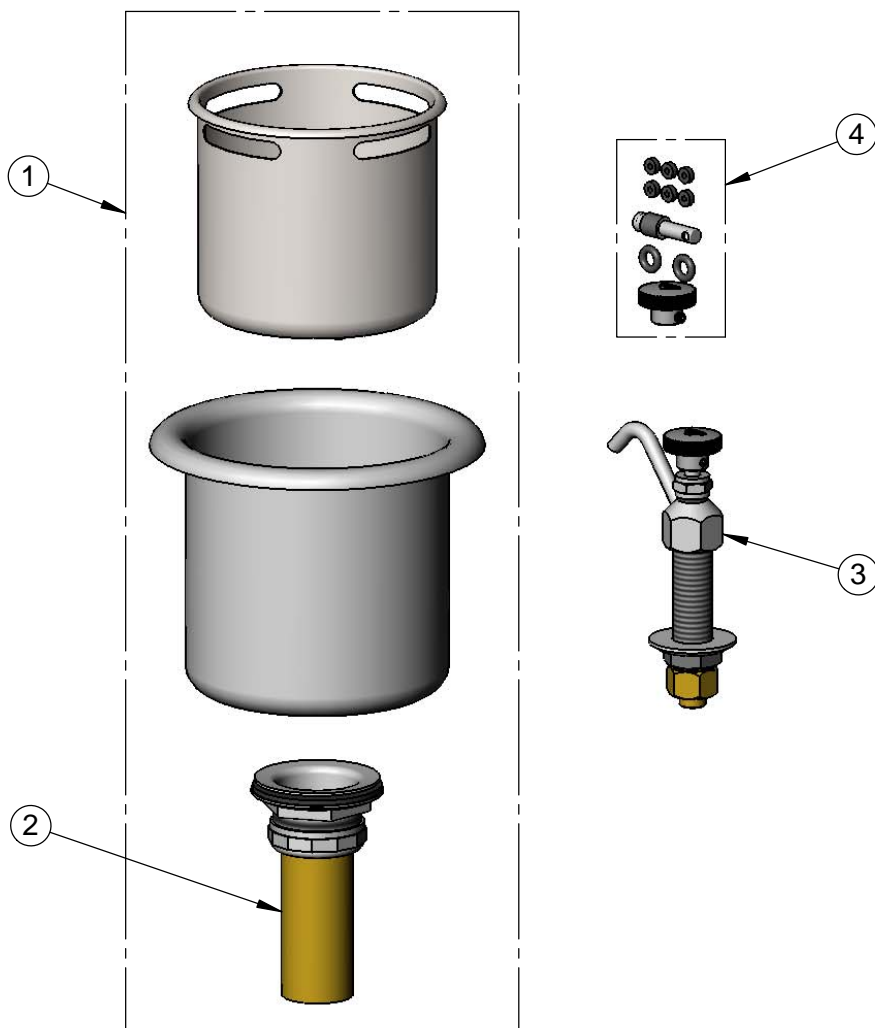
**T&S BRASS AND BRONZE WORKS, INC.**  
 2 Saddleback Cove / P.O. Box 1088  
 Travelers Rest, SC 29690

Model No.  
**B-2282-01-F05**

Item No.

Travelers Rest, SC: 800-476-4103 • Simi Valley, CA: 800-423-0150 • Fax: 864-834-3518 • www.tsbrass.com

| ITEM NO. | SALES NO.  | DESCRIPTION  |
|----------|------------|--|
| 1        | 006678-45  | Dipperwell w/ Stainless Steel Overflow Cup & Drain |
| 2        | 017225-45  | Dipperwell Drain                                   |
| 3        | B-2282-F05 | Dipperwell Faucet w/ 0.5 GPM Flow Control          |
| 4        | B-2282-RK  | Parts Kit for Dipperwell                           |



Product Specifications:  
 Dipperwell Faucet w/ Drain, Stainless Steel Bowl,  
 Inner Overflow Cup & 0.5 GPM Flow Control

|                      |                       |                          |
|----------------------|-----------------------|--------------------------|
| Drawn<br><b>DMH</b>  | Checked<br><b>KJG</b> | Approved<br><b>JHB</b>   |
| Scale:<br><b>NTS</b> |                       | Date:<br><b>05/22/13</b> |