



# K-240 SERVICE FAUCET FOR MOP SINKS



**Click This Link To  
View Assembly Sheet**

Item #: \_\_\_\_\_ Qty #: \_\_\_\_\_

Model #: \_\_\_\_\_

Project #: \_\_\_\_\_

## FEATURES:

8" O.C. water supply.

Quarter turn wedge style handles with colored hot & cold indexes.

9.6 GPM/36.3 LPM.

Wall support bracket & pail hook.

Vacuum breaker. Built-in stops.

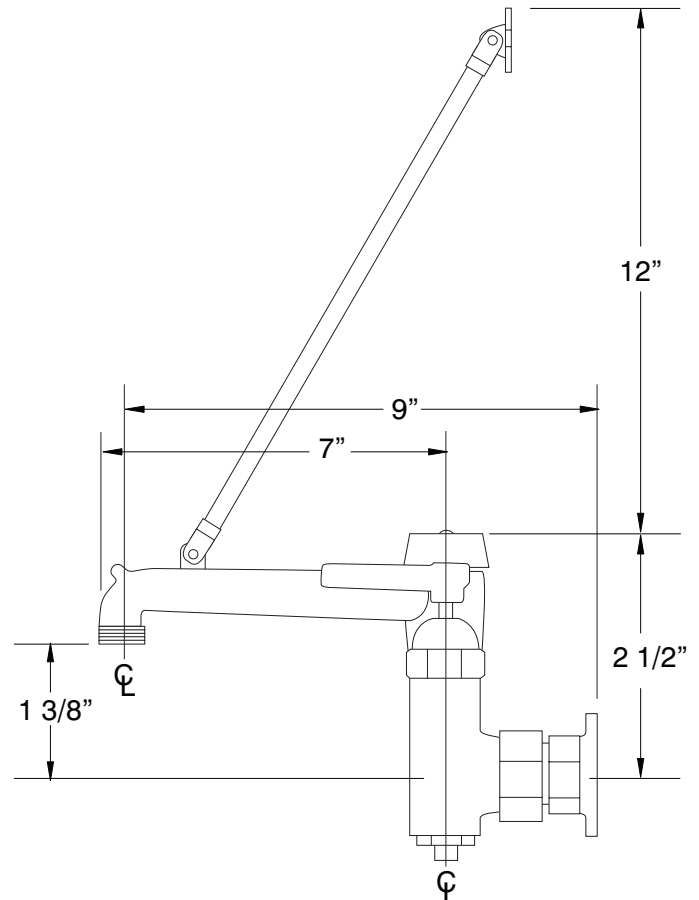
Garden hose outlet.

## MATERIAL:

Brass chrome plated body & spout.

Chrome plated handles.

## DIMENSIONS and SPECIFICATIONS



## Options & Accessories

### Replacment Vacuum Breaker Repair Kit For K-240

K-03



### Replacement Cartridges For K-240 Faucet

\*Can Only Be Used On Faucets  
Purchased After January 2016. For Older  
Faucets, Consult Customer Service.

K-00HB (Set of 2)



Customer Service Available To Assist You **1-800-645-3166** 8:30 am - 8:00 pm E.S.T.

For Orders & Customer Service:

Email: [customer@advancetabco.com](mailto:customer@advancetabco.com) or Fax: 631-242-6900

For Smart Fabrication™ Quotes:

Email: [smartfab@advancetabco.com](mailto:smartfab@advancetabco.com) or Fax: 631-586-2933