



# WORKTOPS/UNDERCOUNTERS

## SIDE MOUNT WORKTOP MODELS 9200

Self-contained stainless steel worktop refrigerator or freezer unit with 3" high backsplash. Randell mullion blower coil, with thermostatic control, cools pans and/or base, and allows for use of optional pans in the full depth interiors. R-134a expansion valve refrigeration system in refrigerators, (R-290 in freezers) both are CFC free. Units with lift-off louver, condensate evaporator, "CFC free" foamed in place insulation and 6" high adjustable legs. Cordset for 115V operation.

PROJECT NAME:

LOCATION:

ITEM NO:

QTY:

MODEL NO:

AIA NO:

SIS NO:

CSI SECTION: 11400

### AVAILABLE MODELS:

#### REFRIGERATORS:

- 9215-32-7
- 9205-32-7
- 9235-32-7
- 9225-32-7

#### FREEZERS:

- 9215F-290
- 9205F-290

### STANDARD FEATURES:

- Side mounted compressor with mullion "Turbo" coil provides proper pan cooling, and "full depth" usable interior space
- R-134a refrigerant in refrigerators and R-290 in freezers both are "CFC free"
- Exterior stainless steel top & front
- Foamed in place "CFC free" urethane insulation
- Self-closing doors with exclusive press-fit magnetic gaskets
- Expansion Valve
- Condensate evaporator
- Cord and plug for 115 volt operation
- 6" high adjustable legs
- One piece stainless steel worktop and a 3" high stainless steel, integral backsplash

**CABINET EXTERIOR:** Cabinet body is constructed of all metal. The top, front, and louver panel are stainless steel. Bottom & back of unit are corrosion resistant steel. Sides are stainless steel. Worktop refrigerators and freezers with 1-1/2" square nosing and 3" high backsplash. Door opening frames are ABS and contain magnetic strip for positive seal of door gaskets. Work surface to be at 36" work height with unit on (4) 6" high legs with adjustable bullet feet.

**CABINET INTERIOR:** Interior of cabinet is fully coved to meet N.S.F. standard #7. The Interior bottom, back, and top are anodized aluminum with coved corners for easy clean-up. The interior ends are ABS. Durable shelf supports molded into sides. Unit insulated with a minimum of 2.5" of CFC free, foamed in place polyurethane.

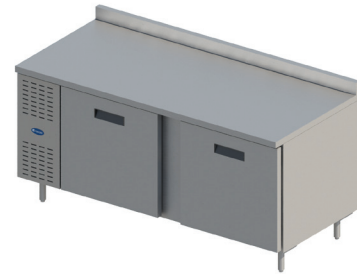
**DOORS:** Stainless steel front with easy to grasp recessed handles, mounted on heavy duty concealed hinges. Hinges are all stainless steel with bronze pivot pin in nylon bushing. Doors with foamed in place insulation, press fit magnetic gaskets (designed for installation and removal without tools), and deep draw ABS interior liner for maximum insulation value.

**REFRIGERATION:** Refrigerators utilize a CFC free, R-134a Expansion Valve refrigeration system that includes condensing unit, and thermostatic control for operator adjustability. Compressor housing to allow maximum airflow and permit mounting of standard hot gas condensate evaporator. Mullion coil, is coated to resist corrosion, and offers maximum air flow. Freezers utilizes R-290 refrigerant with an automatic, self-defrosting system for blower coil. Freezer models equipped with door frame heater element to prevent gasket freezing. Units totally prewired and to be supplied with 8' cordset (NEMA 5-15P) for 115V operation.

### ORIGIN OF MANUFACTURE:

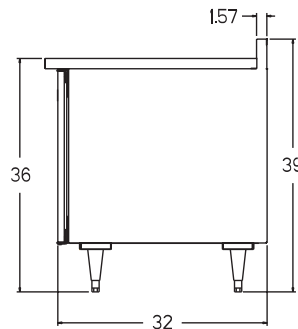
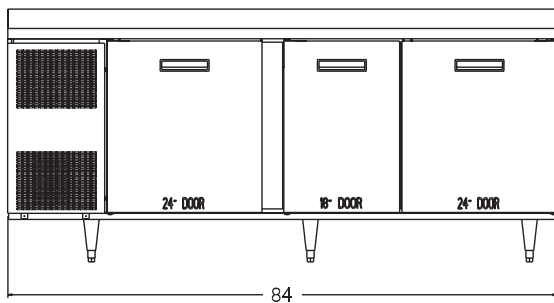
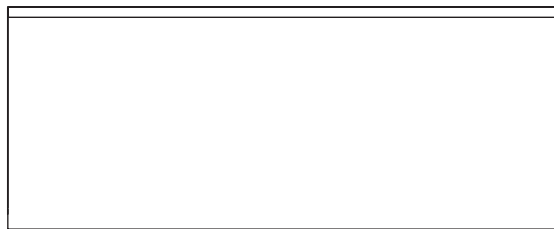
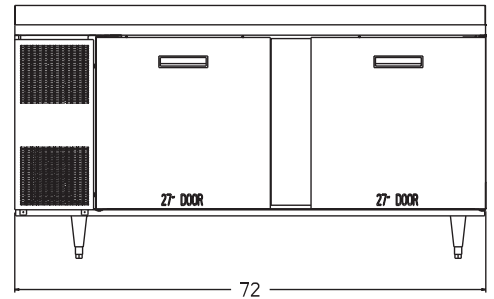
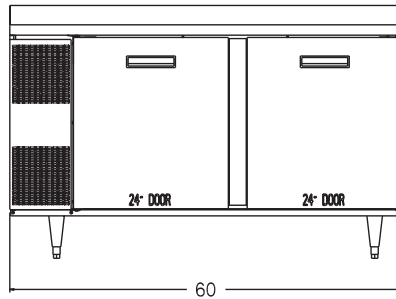
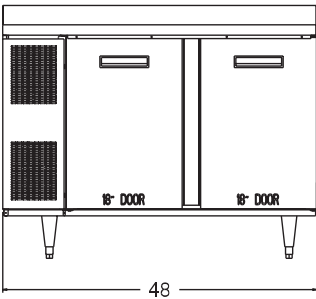
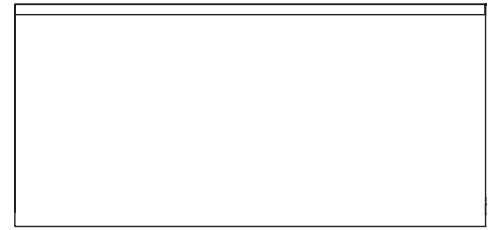
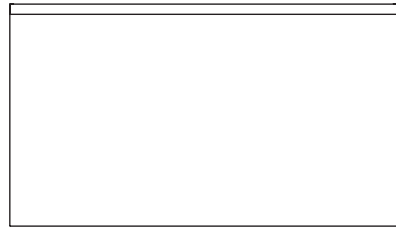
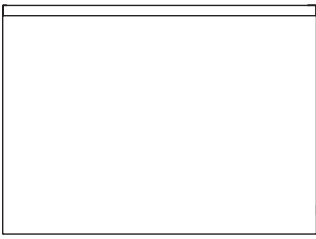
Designed and manufactured in the United States.

9200-32-7 Side Mount Worktops, Model 9200-32-7 shown.



### OPTIONS/ACCESSORIES:

- Stainless steel back panel
- Tray racks for 24" or 27" openings only
- Refrigerated drawers
- Overshelves
- Casters



Drawings are to be viewed in the same order as the chart, one drawing to represent refrigerator and freezer units

Model	L	W	H	Doors	Storage Cu. Ft.	Shelves Cu. Ft.	Power Usage kW (per day)	HP	Volt	Amps	NEMA	Ship Wt.
9215-32-7	48"	33"	36"	(2)18"	11.58	9.5	1.22	1/4	115/60/1	6.5	5-15P	325
9205-32-7	60"	33"	36"	(2)24"	16.21	13.5	1.90	1/4	115/60/1	6.5	5-15P	370
9235-32-7	72"	33"	36"	(2)27"	20.01	20	1.96	1/4	115/60/1	6.5	5-15P	370
9225-32-7	84"	33"	36"	(2)24", (1)18"	23.16	20	2.25	1/4	115/60/1	6.5	5-15P	420
9215F-290	48"	33"	36"	(2)18"	11.58	9.5	3.38	1/2	115/60/1	5.25	5-15P	325
9205F-290	60"	33"	36"	(2)24"	16.21	13.5	4.25	1/2	115/60/1	5.25	5-15P	370

NOTE: When ordering casters, 6" casters equal 35" height; 4" casters equal 33" height