

MODEL: _____ PROJECT: _____ ITEM #: _____ QTY: _____

PRODUCT IMAGE



BR48L-BSB-LR SHOWN with
OPTIONAL 1" TOP and KICK PLATES
AVAILABLE IN 48", 72", & 96" SIZES

OPTIONAL ACCESSORIES

- **BS-100** Four 6" Stainless Steel Legs
- **BS-101** Six 6" Stainless Steel Legs (72" and 96" models)
- **BS-102** Four 4" Stainless Steel Legs
- **BS-103** Six 4" Stainless Steel Legs (72" and 96")
- **BS-106** Left Side Stainless Steel Kick Plate
- **BS-107** Right Side Stainless Steel Kick Plate
- **BC-130** Four 1" Ultra Low profile casters with Brakes
- **BC-131** Six 1" Ultra Low profile casters with Brakes (72" and 96")
- **BC-132** Four 2" Low profile casters with Brakes
- **BC-133** Six 2" Low profile casters with Brakes (72" and 96")
- **BC-134** Four 3" casters with Brakes
- **BC-135** Six 3" casters with Brakes (72" and 96")
- **BS-148** 48" Stainless Steel Front Kick Plate
- **BS-172** 72" Stainless Steel Front Kick Plate
- **BS-196** 96" Stainless Steel Front Kick Plate
- **BS-600** 110V Solenoid Valve + Thermostat, Installed
- **BC-500** 1/3 HP Condensing Unit (134A Refridgerant)

STANDARD FEATURES

- **Electrical**
115 V, 60 Hz. Furnished with a terminal block inside the box for a hard wire connection (supplied by the end user)
Dedicated 15 Amp circuit recommended.
2 Door Model: 1.0 Full Load Amp
3 Door Model: 1.5 Full Load Amp
4 Door Model: 2.0 Full Load Amp
- **Refrigeration**
134A expansion valve installed (standard). Optional 404 expansion valve available. Thermostat not included.
IMPORTANT: Specify left or right side hook-up
- **Operating Range**
30°F-40°F
- **Case Capacity**

	48"	72"	96"
Long Neck Bottles:	11.5	20	30
12 oz. Cans:	20	34	40
Wine Bottles (each):	106	170	300
- **Interior**
20 gauge stainless steel.
Two adjustable epoxy coated shelves with floor rack
Door Opening: 29 11/16" high x 19 15/16" wide
- **Exterior**
Sides: 20 gauge stainless steel or black vinyl
Front: 20 gauge stainless steel, black vinyl or glass
Back: 20 gauge galvanized steel
Top: 20 gauge galvanized steel with option of stainless steel
- **Insulation**
Foamed-in-place polyurethane
- **Plumbing**
1/2" drain connection required for condensation. Drain line connection will be on the same side as the refrigeration line location selected. A 100 V Condensate Evaporator pan may be used in place of a drain line but it is important to make sure you have a good location for it. Please consult with your refrigeration installation company and check local codes.

** This equipment is intended for the storage and display of non-potentially-hazardous bottle or canned products only **



APPROVED BY:

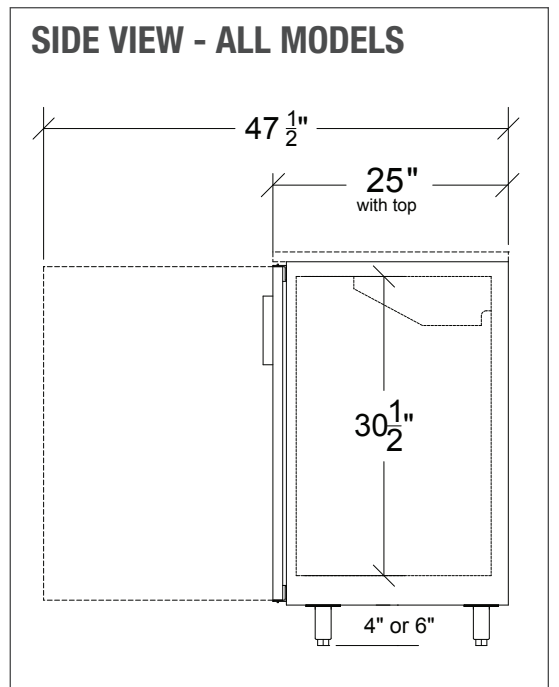
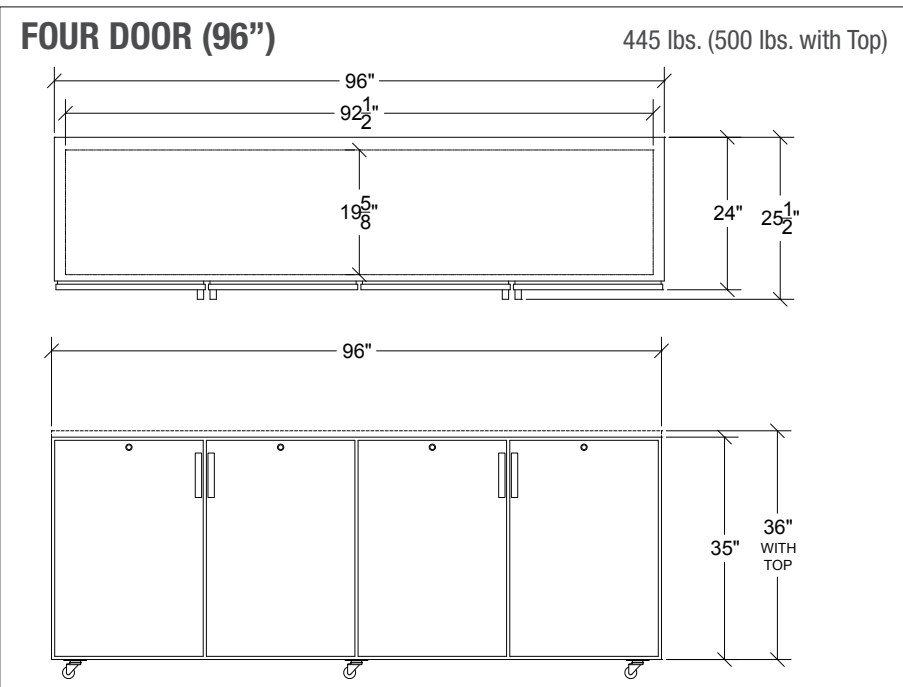
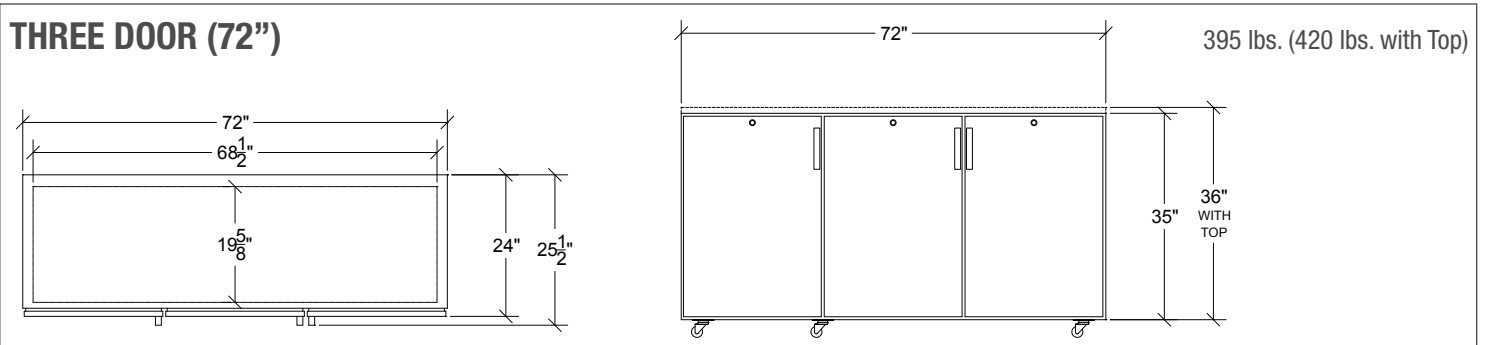
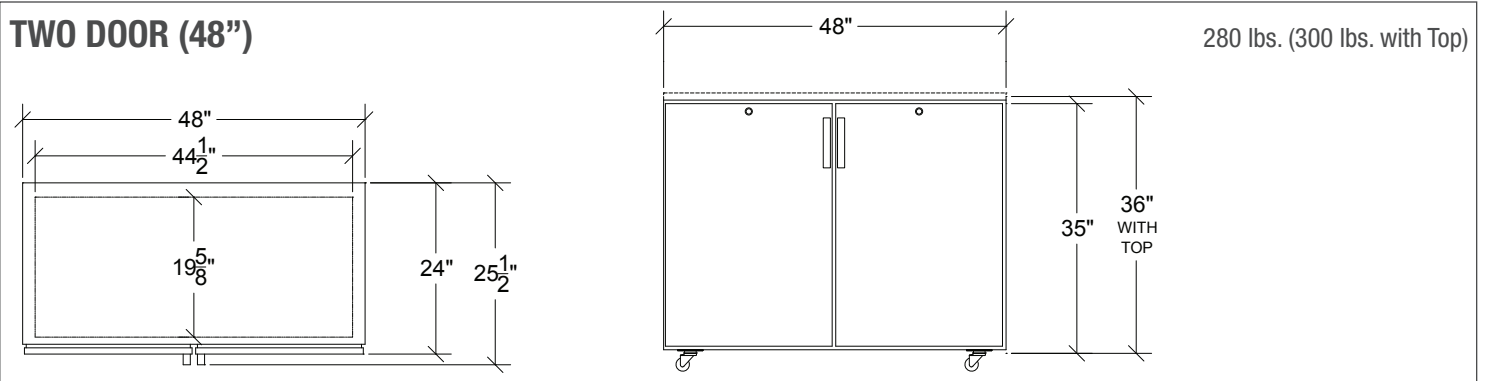
CERTIFICATIONS:

Due to our commitment to continued product improvement, specifications are subject to change without notice.

REFRIGERATION

REMOTE BACK BAR COOLERS

MODEL: _____ PROJECT: _____ ITEM #: _____ QTY: _____



Note: Optional casters raise height 1" higher than wheel size
Note: Optional 4" or 6" legs available



APPROVED BY:

CERTIFICATIONS:

Due to our commitment to continued product improvement, specifications are subject to change without notice.