



18" SHALLOW-DEPTH SERIES SINGLE DOOR REFRIGERATOR/WINE RESERVE



HD24RS
Shown with Solid Stainless
Steel Door (S)



HD24RS
Shown with Glass with Stainless
Steel Frame Door (S)



HD24WS
Shown with Glass with Stainless
Steel Frame Door (S)

MODELS	
	HD24RS
	HD24WS

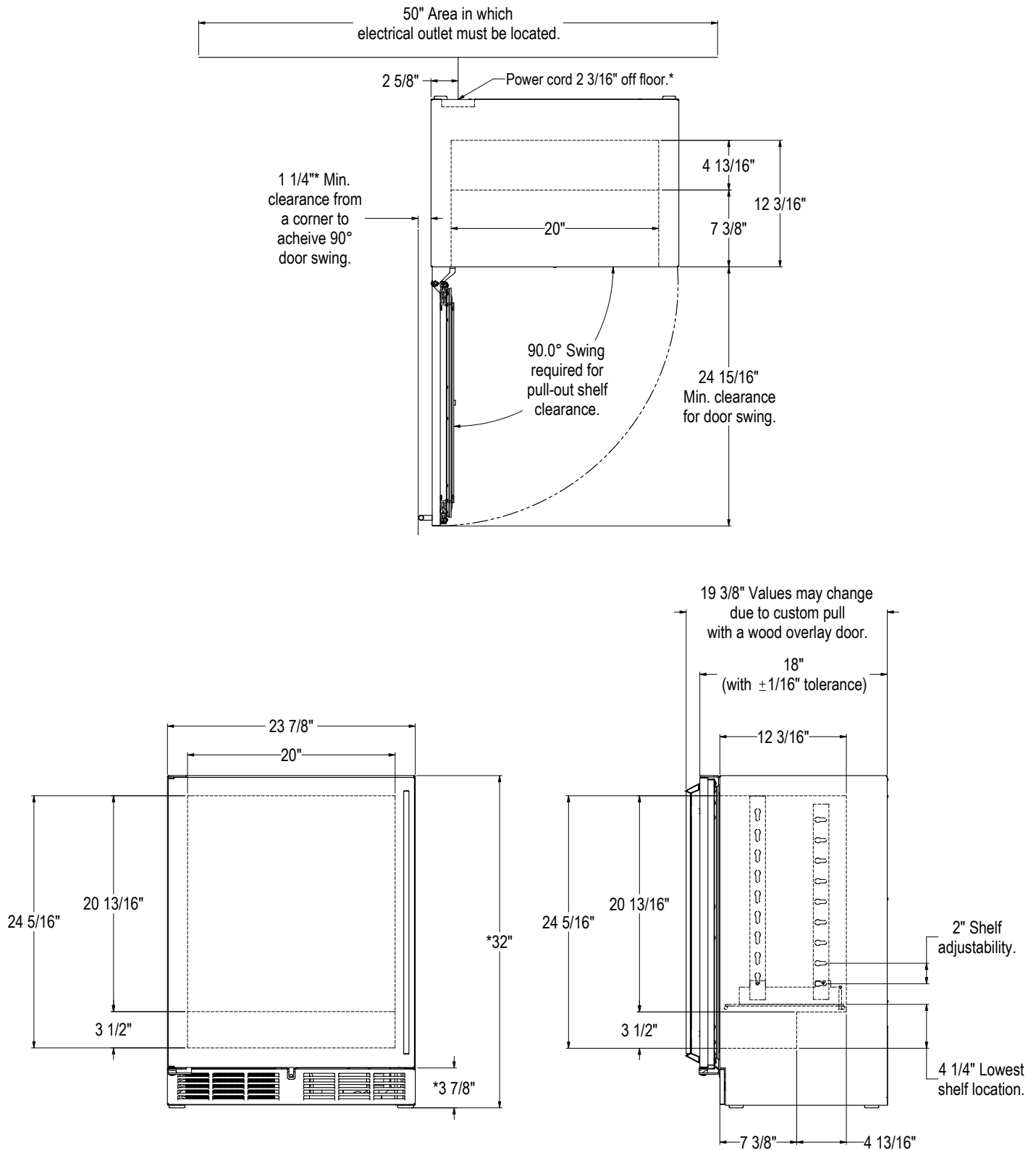


MODEL NO.		HD24RS	HD24WS
CABINET DIMENSIONS	Length Ins. (mm)	23-7/8" (606)	23-7/8" (606)
	Depth Ins. (mm)	18" (457)	18" (457)
	Height Ins. (mm)	32" (813)	32" (813)
SHIP WEIGHT LBS. (KG)		185 (83)	185 (83)
CAPACITY CU. FT. (L.)		3.1 (88)	3.1 (88)
SHELVING		2 black vinyl-coated full-extension shelves (adjustable)	4 black vinyl-coated full-extension wine shelves (adjustable). Each wine shelf holds 5 (750 ml) wine bottles.
CABINET CONSTRUCTION (INT.)		Interior Stainless Steel	
CABINET CONSTRUCTION (EXT.)		Exterior Sides, Exterior Top Stainless Steel Exterior Back Galvanized Door Exterior Customer Choice (see below under 'Customer Options')	
CABINET INSULATION		Polyurethane-Ecomate. Wall Thickness-2" Door, Drawer Thickness-2" (solid stainless steel only)	
DOORS, HINGING & HARDWARE		Number of Doors 1 Opening Style Hinged (Left or Right) Door Style Solid or Glass Door Swing Clearance 25" (635) Locks Available (factory installed)	
CONDENSING UNIT		H.P. 1/6 Condenser Access Front	
REFRIGERATION		Refrigerant R134a Expansion Device Capillary Tube Type w/ Hermetic Compressor	
PLUMBING		None required. Moisture drains to self evaporating condensate pan	
ELECTRICAL		Electrical Supply 115V/60 Hz/1 Phase Running Load Amps 2.3 Cord Connection Cord Connected (3-prong 6' NEMA 5-15P) Thermostat Electro-Mechanical Lighting Type Incandescent	
TEMPERATURE SETTINGS F°(C°)		Factory Temp. Setting-Refrigerator 38°(3.3°) Temp. Range-Refrigerator 30°- 42°(-1.1°- 5.5°)	Factory Temp. Setting-Refrigerator 55°(12.8°) Temp. Range-Refrigerator 40°- 68°(4.4°- 20°)
CUSTOMER OPTIONS		Door Finishes Black Vinyl Clad (B), Laminated (L), Field Laminated (F), Stainless (S), Laminated over Black (X), Laminated over Stainless Steel (U), Glass w/Black Frame (G), Glass w/Stainless Steel Frame (T), Glass w/Laminate (over black frame)(A), Glass w/Laminate (over stainless steel frame)(W) Handle Options 24" full length stainless steel, 24" full length polished brass, Classic 6" chrome w/black vinyl grip, Classic 6" polished brass w/black vinyl grip, 12" stainless steel, 12" polished brass, tab handle (top mount, stainless steel) Lock Options Chrome or Polished Brass	
ADDITIONAL ACCESSORIES		Door Locks (Castors and Legs: Not Applicable)	

NOTE: This equipment is intended for the storage and display of non-potentially hazardous bottled or canned products only!



18" SHALLOW-DEPTH SERIES SINGLE DOOR REFRIGERATOR/WINE RESERVE



Form No. Z2366
Rev. 06.06.2017