



MEDIUM CAPACITY DISPOSERS

COMMERCIAL DISPOSERS FOR HEAVY DUTY FOODSERVICE USE

PRODUCT FEATURES & SPECIFICATIONS

IDEAL FOR HEAVY DUTY APPLICATIONS

- Restaurants
- Schools & universities
- Healthcare & hospitals
- Travel & leisure

PRODUCT OVERVIEW

- Corrosion resistant stainless steel grind chamber
- 3/4" (19.1 mm) rubber mounting above grinding chamber, enclosed in chrome plated covers for sanitation and appearance
- 1-1/2 to 2 H.P. induction motor with built-in thermal overload protection, 1725 RPM, totally enclosed to provide protection against outside moisture with controlled power air flow to cool motor—provides better efficiency, longer life
- Cast nickel chrome alloy stationary and rotating shredding elements for long life and corrosion resistance, designed for reverse action grinding
- Double-tapered Timken roller bearings provide a shock absorbing cushion
- Triple lip seal protects motor from water damage and secondary spring-loaded oil seal provides double protection against water and loss of grease
- Stainless steel and chrome plated finish—paint-free for lasting sanitation



1 YEAR ON-SITE PARTS & LABOR WARRANTY

WHAT'S INCLUDED

- Base disposer: 1 mounting gasket, support legs
- Disposer packages: 1 mounting/bowl assembly, 1 electrical control, 1 syphon breaker, 1 solenoid valve, and 1 flow control valve (the standard flow control valve will be sent with the unit unless the optional valve is specified)

MODEL & HORSEPOWER/ELECTRICAL REQUIREMENTS

<input type="checkbox"/> SS-150 1-1/2 H.P.	<input type="checkbox"/> 115/208-230V, 60 Hz, 1 Ph, 12.2/5.7/6.1 amps, CUL <input type="checkbox"/> 208-230/460V, 60 Hz, 3 Ph, 3.2/4.6/2.3 amps, CUL <input type="checkbox"/> 115/208-230V, 60 Hz, 1 Ph, 12.2/5.7/6.1 amps, CUL, short body <input type="checkbox"/> 208-230/460V, 60 Hz, 3 Ph, 3.2/4.6/2.3 amps, CUL, short body	<input type="checkbox"/> 115/230V, 50 Hz, 1 Ph, 10.3/5.6 amps <input type="checkbox"/> 230/460V, 50 Hz, 3 Ph, 3.0/1.5 amps <input type="checkbox"/> 380V, 50 Hz, 3 Ph, 1.7 amps
<input type="checkbox"/> SS-200 2 H.P.	<input type="checkbox"/> 115/208-230V, 60 Hz, 1 Ph, 17.4/7.7/8.7 amps, CUL <input type="checkbox"/> 208-230/460V, 60 Hz, 3 Ph, 3.3/5.0/2.5 amps, CUL <input type="checkbox"/> 115/208-230V, 60 Hz, 1 Ph, 17.4/7.7/8.7 amps, CUL, short body	<input type="checkbox"/> 208-230/460V, 60 Hz, 3 Ph, 3.3/5.0/2.5 amps, CUL, short body <input type="checkbox"/> 208-240/460V, 60 Hz, 3 Ph, 3.3/5.0/2.5 amps, NOM

ELECTRICAL CONTROLS

<input type="checkbox"/> AS-101 Control Center AquaSaver® (Auto-Reversing)	<input type="checkbox"/> CC-101 Control Center (Auto-Reversing)	<input type="checkbox"/> CC-202 Control Center (Auto-Reversing)	<input type="checkbox"/> Manual Reverse Switch (Dual Direction)	<input type="checkbox"/> Manual Switch (Single Direction)




Industry Exclusive!
Automatically regulates water flow to grind load

A complete collection of our product drawings is available for download at the **InSinkErator Revit/CAD Library**, which can be found at www.insinkerator.com/foodservice. Product information is also accessible on **The KCL CADalog**. More information is available from KCL at www.kclcad.com.



DISPOSER MOUNTING ASSEMBLIES (choose one)




Bowl Mounts

-  Type A Sink Bowl Assembly: Includes bowl, water nozzle(s), bowl cover, splash baffle
-  Type B Sink Bowl Assembly: Includes bowl, water nozzle(s), silver guard, splash baffle
-  Type C Sink Bowl Assembly: Includes bowl, water nozzle(s), splash baffle

Sink Bowl Assembly Size

- 12" (304.8 mm) with one adjustable water nozzle
- 15" (381.0 mm) with one adjustable water nozzle
- 18" (457.2 mm) with two adjustable water nozzles

Collar Mounts

-  #5 Sink Flange Mounting Assemblies for 3-1/2" – 4" (88.9 mm – 101.6 mm) sink opening (support legs are recommended)
-  #6 Collar Adaptor for welding into trough, provides 6-5/8" (168.3 mm) opening, includes splash baffle
-  #7 Collar Adaptor for welding into sink, provides 6-5/8" (168.3 mm) opening, includes splash baffle and stopper

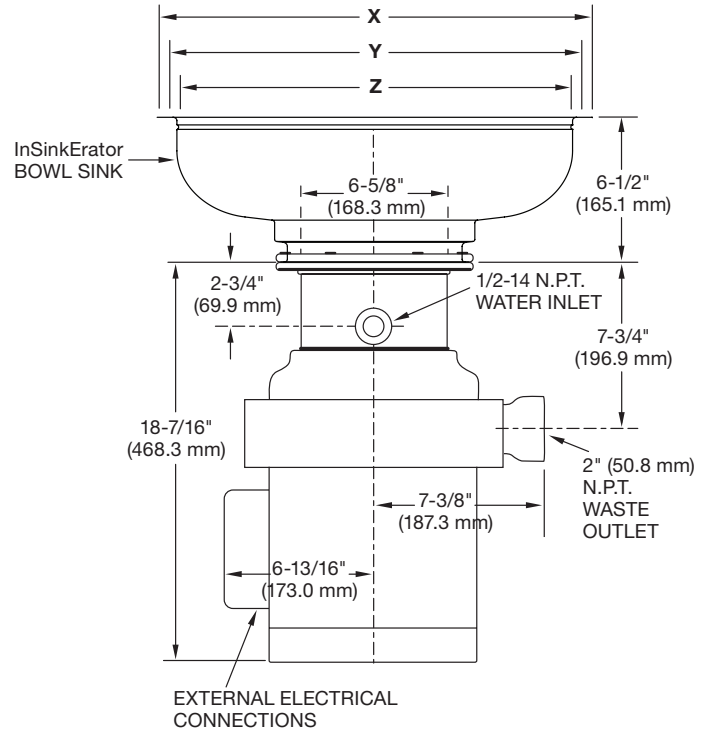
DIMENSIONS

IMPORTANT: Use dimension chart below for adaptor height in place of InSinkEerator bowl sink height when mounting directly to a sink.

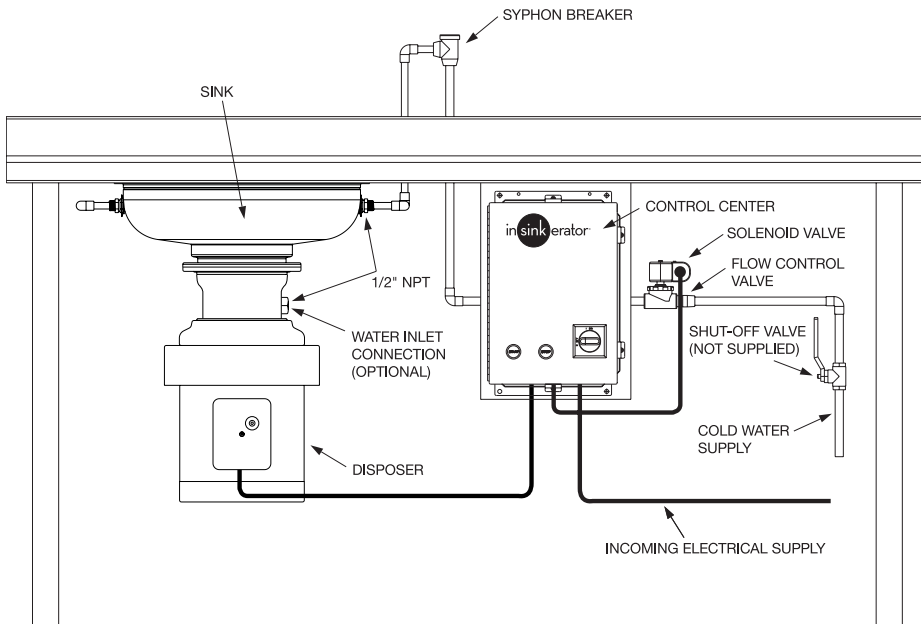
Bowl Sinks	Flange O.D. X	Work Table Hole Y	Flange I.D. Z	Height
12" (304.8 mm)	13-1/2" (342.9 mm)	12-1/4" (311.2 mm)	12" (304.8 mm)	6-1/2" (165.1 mm)
15" (381 mm)	16-1/2" (419.1 mm)	15-1/4" (387.4 mm)	15" (381.0 mm)	6-1/2" (165.1 mm)
18" (457.2 mm)	19-1/2" (495.3 mm)	18-1/4" (463.6 mm)	18" (457.2 mm)	6-1/2" (165.1 mm)
Adaptors	X	Y	Z	Height
No. 5	Fits Standard Sink Opening: 3-1/2" – 4" (88.9 mm – 101.6 mm)			2-3/4" (69.9 mm)
No. 6	7-13/16" (198.4 mm)	6-7/8" (174.6 mm)	6-5/8" (168.3 mm)	1-3/16" (30.7 mm)
No. 7	9-1/8" (231.8 mm)	7-7/8" (200.0 mm)	7-5/8" (193.7 mm)	2-1/16" (52.4 mm)

NOTE:

- Adaptors are available upon request for all competitor sink bowls or cones.
- Please have sink bowl/cone type with the necessary dimensions when ordering adaptors.
- Also available as a **short body** model. Reduces overall height of disposer by 1" (25.4 mm).



RECOMMENDED INSTALLATION



RECOMMENDED WATER USAGE

	Standard	Optional
SS-150	7 GPM (26.5 LPM)	5 GPM (18.9 LPM)
SS-200	7 GPM (26.5 LPM)	5 GPM (18.9 LPM)

For additional information, see Foodservice Product Information Binder.