

PIZZA PREP TABLE

VPP67

- 3 Year Parts & Labor Warranty Plus an Additional 2 Year Compressor Warranty
- Exclusive 2 Year Warranty on Santoprene Door Gaskets

VICTORY

ULTRASPEC®

STANDARD FEATURES

- Touch Point™ Electronic Control
- Stainless Steel Exterior / Aluminum Interior
- Stainless Steel Top
- (2) Heavy Duty Epoxy Coated Wire Shelves Per Section
- Accommodates up to 6" Deep Pans - 4" Deep Pans Included
- Locking Divider Bars
- Heavy Duty Pan Liner
- 19" Composite Cutting Board
- Santoprene Door Gaskets with Exclusive 2 Year Warranty
- 3" Casters Standard
- Hinged, Insulated, Flat Lift Up Lids
- Maintains Temperatures of 36°F - 38°F



VPP67

OPTIONS & ACCESSORIES

- Secure-Temp 1.0™ Technology
- Remote Models
- Correctional Packages
- Exterior Door Laminate
- Single or Double Overshelves
- 6" Casters or 6" Legs
- Extra Shelves
- Door Locks
- Bun Tray Racks
- Garnish Racks
- Gasket Guard
- Optional Voltages: 220/50/1, 220/60/1



3779 Champion Blvd—Winston-Salem, NC 27105

PH: (888) 845-9800 - Fax: (800) 253-5168

sales@victoryrefrigeration.com www.victoryrefrigeration.com

CABINET CONSTRUCTION

Exterior is constructed from stainless steel. Interior liner is made of aluminum for superior resistance to corrosion.

Cabinet insulation is CFC free foamed-in-place polyurethane of two-inch minimum thickness. Three-inch casters, 2 with brakes, are standard. Six-inch casters or legs are optional.

Composite cutting board supplied with cabinet is 19" wide. It is readily removable for cleaning. Two epoxy-coated steel wire shelves are supplied behind each door as standard. Units will accept pans up to 6" deep. Pans are not included.

DOOR CONSTRUCTION

Doors are mounted to face of cabinet with lift-off hinges permitting them to self close under their own weight. Hinges also allow doors to stay open 120° and permit easy door removal for service and cleaning if required. A plug in type vinyl magnetic gasket is attached to each door for positive seal. Door handle is contoured to permit easy opening of doors with fingers from both top and bottom of handle.

REFRIGERATION SYSTEM

Systems are designed using CFC free R134a refrigerant and cap tube between condenser and evaporator. Recirculated, forced air from evaporator is discharged 3 ways. Slightly over and mostly under pans which are recessed approximately 3" from top of raised rail, and into the cabinet directly. Coils are plastic coated for maximum corrosion protection. Automatic condensate evaporator is provided to eliminate the need of floor drains.

CHARACTERISTICS	VPP67
Net Capacity	27
Width, Overall (in.)	67"
Depth, Overall (inc. Handles)	38 3/8"
Height, Overall (in.)	43 3/8"
No. of Door(s)	2
Depth with Door Open 90°	57"
Clear Door Opening (in.)	21 1/2" x 23 1/2"

ELECTRICAL DATA	
Cabinet Voltage	115/60/1
NEMA Plug	5-15P
Total Amperes	10.6

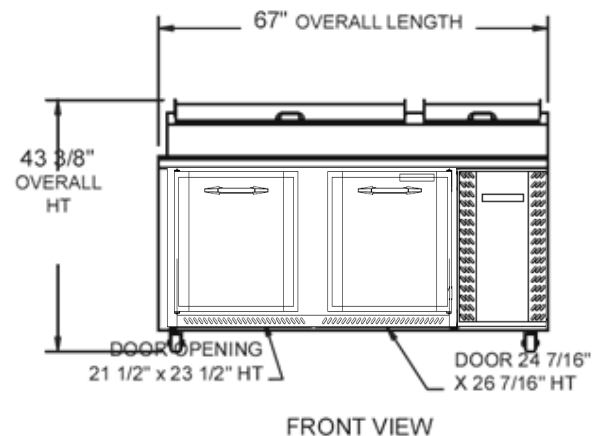
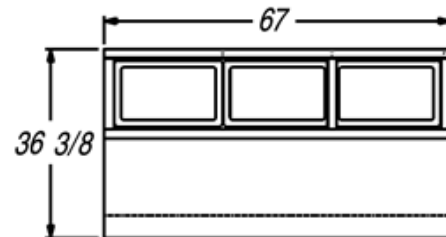
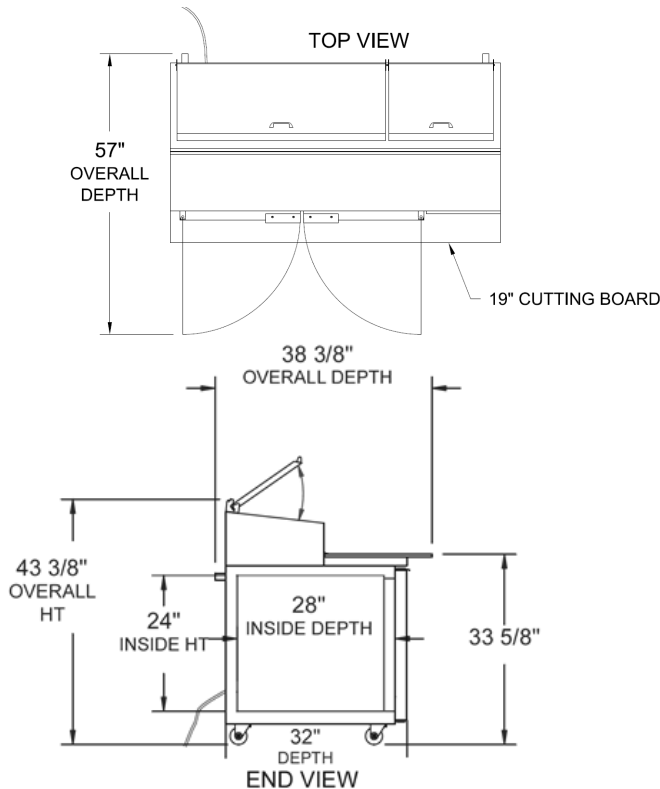
NOTE: Plug style, voltage and full load amps may vary depending on certain options selected such as optional voltages and compressor upgrades.

REFRIGERATION DATA	
Condensing Unit Size	1/2 HP
Refrigerant	R-404A

CRATED DIMENSIONS	LBS
Two Section	445

Remote units use R-404A refrigerant standard and come with 6" legs

Note: In order to provide peak operating performance the cabinet must have a 2 inch all around clearance and 12 inches above the top of the condensing unit. This ensures an adequate air supply and space for routine maintenance and/or service if required.



We reserve the right to change specifications and product design without notice. Such revisions do not entitle the buyer to corresponding changes, improvements, additions or replacements for previously purchased equipment. Dimensional tolerances +/- 1/4". Metric dimensions (MM)

an Ali Group Company



The Spirit of Excellence