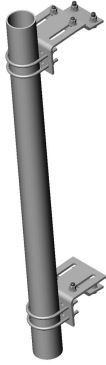


PM-SL4



Universal Taper Pipe Mount Slider Bracket for 4-1/2 in OD pipe

Product Classification

Product Type Pipe mount

Dimensions

Pipe Outer Diameter 114.3 mm | 4 1/2 in
Height 127.0 mm | 5.0 in
Length 304.8 mm | 12.0 in
Weight 14.2 kg | 31.3 lb
Width 152.4 mm | 6.0 in

Environmental Specifications

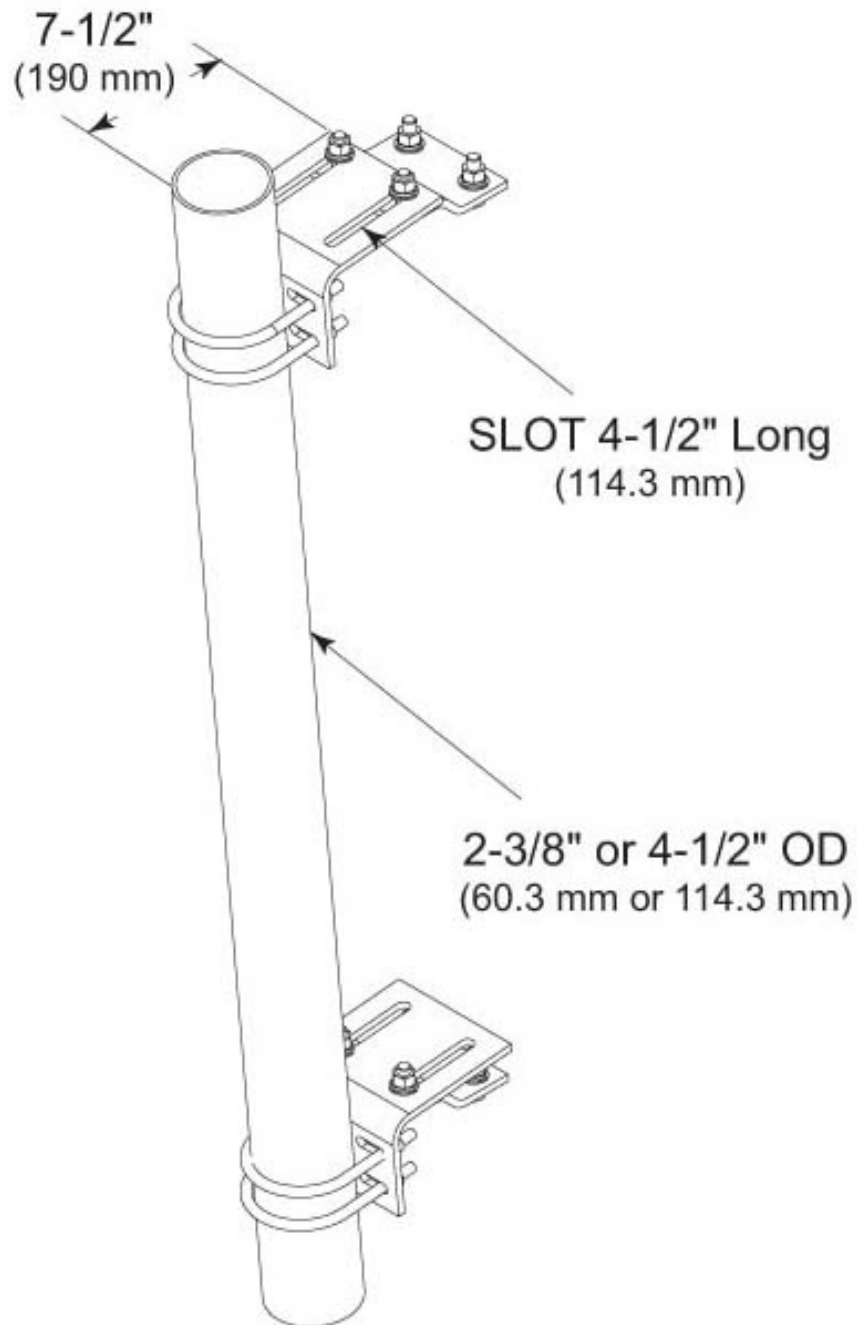
Wind Rating 120 mph (BWS) at 150 ft AGL
Wind Rating Test Method TIA/EIA-222

General Specifications

Pipe, quantity 0
Tower Taper Tapered
Includes Hardware | Sliding pipe mount brackets
Material Type Hot dip galvanized steel
Mounting Saddle mounts
Note One 96 in x 8 in panel antenna per pipe mount
Package Quantity 2

PM-SL4

Outline Drawing



Regulatory Compliance/Certifications

PM-SL4

Agency

ISO 9001:2015

Classification

Designed, manufactured and/or distributed under this quality management system

*** Footnotes****Wind Rating**

BWS—Base Wind Speed; FBC—Florida Building Code