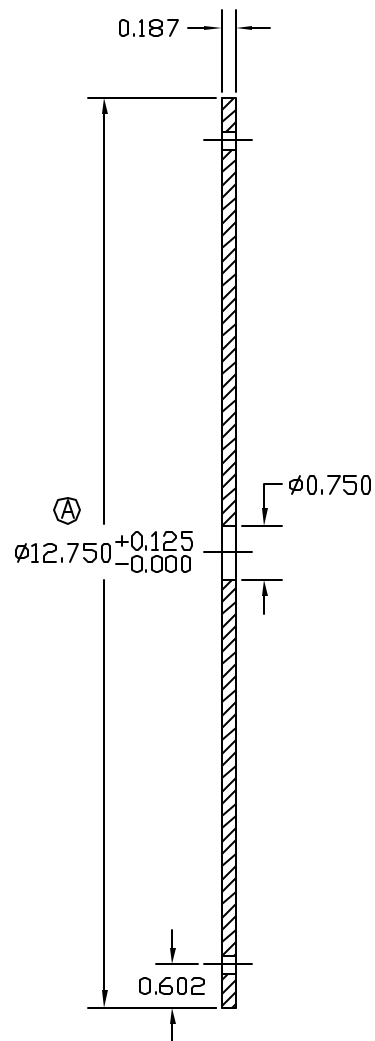
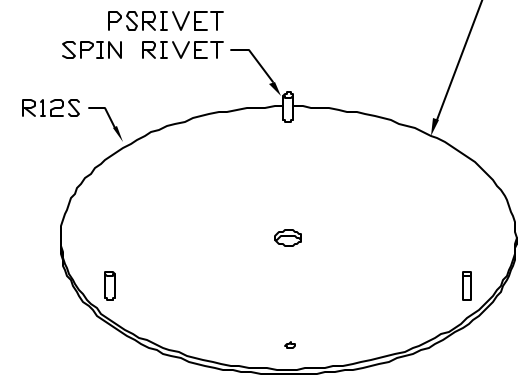


ZINC PLATE/ULTRASEAL AFTER RIVETING



CHECK STEEL BLANK O.D. BEFORE PUNCHING HOLES AND ADJUST LOCATIONS IF NEEDED



THIS DOCUMENT AND THE CONTENTS THEREOF IS THE PROPERTY OF HARGER INC., AND IS FURNISHED TO YOU FOR INFORMATION ONLY. THE INFORMATION CONTAINED HEREIN IS CONFIDENTIAL AND OF A PROPRIETARY NATURE AND MUST NOT BE DISCLOSED TO THIRD PARTIES WITHOUT THE EXPRESS WRITTEN APPROVAL OF HARGER INC.

C	ADD TOLERANCE AND GAUGE NOTES	082704	EHS
B	CHANGED TO SPIN RIVET	05110D	LAL
A	O.D. WAS 12.500	01060D	LAL
	O.D. TO CL OF PIN WAS .500		
LET	REVISION	DATE	BY
TOLERANCES UNLESS NOTED:			
	FRACTIONAL	+/-	1/64
	.00	+/-	.010
	.000	+/-	.005

PART NO. 12PS
STEEL TEST WELL COVER

DRAWN BY: LAL	REVISION: C
CHECKED BY:	SCALE: 3/8
DATE: 010600	SHEET: 1 OF 1

HARGER
301 ZIEGLER DRIVE
GRAYSLAKE, IL 60030
(847) 548-8700