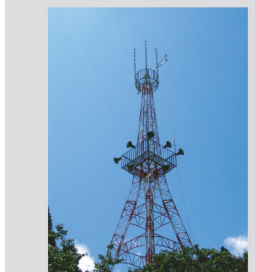
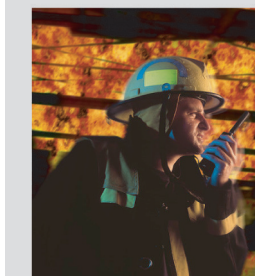




COMM SERIES

Communications Power Supplies in 12, 24 and 48VDC Output

When you need clean reliable DC power for your communications needs, look to the industry leader in switch mode power supplies for peace of mind. Since 1986 ICT has been a leader in reliability, support and innovation. We design, manufacture, ship and support our products locally in our North American facility. When you need high quality, field tested communications power supplies with fast reliable delivery, rely on the ICT Comm Series.



Reliability

- ▶ ICT has been building highly reliable DC power products for over 30 years
- ▶ Only quality name brand components are used
- ▶ Efficient design reduces number of parts and connections that can fail
- ▶ Every power supply shipped is serial number tracked
- ▶ Rugged terminal block connectors allow trouble-free wiring connections

Performance

- ▶ High efficiency switchmode design for small size and clean output power
- ▶ Extra input and output filtering effectively removes interference
- ▶ Isolated outputs are compatible with negative or positive ground equipment
- ▶ Automatic current limiting protects power supply and connected loads
- ▶ Built-in fuse for extra protection

Dependability

- ▶ All ICT power products are manufactured in North America
- ▶ Our deliveries are typically measured in days, not weeks
- ▶ All ICT products are supported by our in-house engineering team

Flexibility

- ▶ Wide selection from 120 to 360 watts of power
- ▶ 12, 24 and 48VDC outputs
- ▶ Desktop standard, rack and wall mount solutions available
- ▶ Broad selection of matching radio covers and complete base stations



100-200W models in 12 and 24VDC output.



200-360W models in 12, 24 and 48VDC output.

Match your ICT Comm Series power supply with custom covers for popular land mobile radios to create functional, space saving base stations.



Find out more. Go to www.ict-power.com and click on ACCESSORIES & RADIO COVERS.



12VDC Output

Model Number	Input Voltage Range	Output Voltage	Output Current (Cont.)	Output Current (Peak)	Current Limiting	Line Regulation	Load Regulation	Output Ripple (Max)	Efficiency (Typical)	Dimensions (inches)		
										L	W	H
ICT12012-10A	90-130 VAC	13.8 VDC +/- 150 mV	7.5 Amps	10.0 Amps	10.5 Amps	0.20%	0.75%	20 mV RMS	85%	7.60	<i>See Tech Note</i>	1.80
ICT12012-12A	90-130 VAC	13.8 VDC +/- 150 mV	10.0 Amps	12.0 Amps	12.5 Amps	0.20%	0.80%	20 mV RMS	85%	7.60	<i>See Tech Note</i>	1.80
ICT12012-15A	90-130 VAC	13.8 VDC +/- 150 mV	13.0 Amps	15.0 Amps	15.5 Amps	0.20%	0.80%	20 mV RMS	85%	7.60	<i>See Tech Note</i>	2.50
ICT12012-20A	90-130 VAC	13.8 VDC +/- 150 mV	17.0 Amps	20.0 Amps	20.5 Amps	0.20%	0.85%	20 mV RMS	85%	7.60	<i>See Tech Note</i>	2.50
ICT12012-30A	90-130 VAC	13.8 VDC +/- 150 mV	25.0 Amps	30.0 Amps	31.0 Amps	0.20%	0.85%	20 mV RMS	85%	7.60	<i>See Tech Note</i>	2.50

24VDC Output

Model Number	Input Voltage Range	Output Voltage	Output Current (Cont.)	Output Current (Peak)	Current Limiting	Line Regulation	Load Regulation	Output Ripple (Max)	Efficiency (Typical)	Dimensions (inches)		
										L	W	H
ICT12024-5A	90-130 VAC	27.6 VDC +/- 150 mV	4.0 Amps	5.0 Amps	5.5 Amps	0.20%	0.75%	20 mV RMS	85%	7.60	7.10	1.80
ICT12024-10A	90-130 VAC	27.6 VDC +/- 150 mV	8.0 Amps	10.0 Amps	10.5 Amps	0.20%	0.75%	20 mV RMS	85%	7.60	7.10	2.50
ICT12024-15A	90-130 VAC	27.6 VDC +/- 150 mV	13.0 Amps	15.0 Amps	15.5 Amps	0.20%	0.75%	20 mV RMS	85%	7.60	7.10	2.50

48VDC Output

Model Number	Input Voltage Range	Output Voltage	Output Current (Cont.)	Output Current (Peak)	Current Limiting	Line Regulation	Load Regulation	Output Ripple (Max)	Efficiency (Typical)	Dimensions (inches)		
										L	W	H
ICT12048-5A	90-130 VAC	48.0 VDC +/- 150 mV	4.0 Amps	5.0 Amps	5.5 Amps	0.50%	1.00%	40 mV RMS	80%	7.60	7.10	2.50

Options

Description	Model Number
Wallmount Bracket Kit to turn your desktop Comm Series into a wall mount configuration	ICT-WMB
2RU - 19" Rack Mount Kit Mount one or two Comm Series in a standard 19" equipment rack	ICT-RM2U

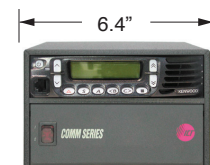
Other AC Input Voltages

Visit www.ict-power.com to find 220 VAC input models.

ICT Comm Series power supplies can be ordered in two different widths to match the land mobile radio manufacturers' standard sizes. ICT covers match the width of the radio to provide an optimized space saving solution. Visit www.ict-power.com, click on Accessories & Radio Covers or download the ICT Base Station Matrix to see which ICT power supply and cover fits your radio model.



'A' Width



'AG' Width

