

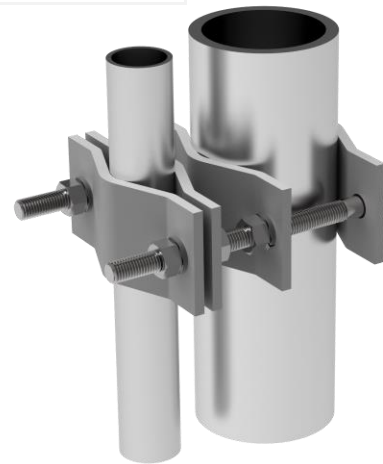
## PARALLEL PIPE-TO-PIPE

| Model   | 1st Pipe          | 2nd Pipe             | Clamp Material | Screw Material |
|---------|-------------------|----------------------|----------------|----------------|
| 107-85  | 1.5" to 3.5" dia. | 1.5" to 3.5" dia.    | Steel HDG      | Steel HDG      |
| 108-85  | 2.5" to 5" dia.   | 2.5" to 5" dia.      | Steel HDG      | Steel HDG      |
| 112-85  | 1.5" to 3.5" dia. | 1.5" to 3.5" dia.    | Steel HDG      | Steel HDG      |
| 112L-85 | 2.25" to 5" dia.  | 2.25" to 5" dia.     | Steel HDG      | Steel HDG      |
| 112M-85 | 1.5" to 3.5" dia. | 2.25" to 5" dia.     | Steel HDG      | Steel HDG      |
| 126-85  | 1.5" dia.         | 1.5" to 2.4" dia.    | Aluminum       | Steel HDG      |
| 167-85  | 1.5" dia.         | 0.75" to 2.375" dia. | Steel HDG      | Steel HDG      |
| 167B-85 | 0.75" dia.        | 0.75" to 2.375" dia. | Steel HDG      | Steel HDG      |

HDG=Hot Dip Galvanized



112-85 112L-85 112M-85



107-85



126-85



167-85 167B-85