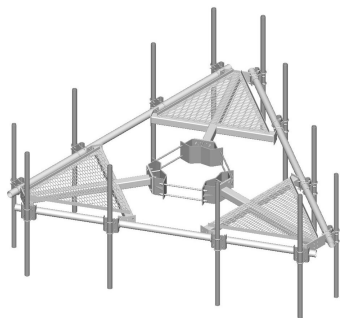


# MC-PK12M-12-126



Low-Profile Co-location Platform Kit, 12 ft face, 12 in to 50 in OD, includes twelve 126 in pipes

## Product Classification

**Product Type** Monopole platform kit

## General Specifications

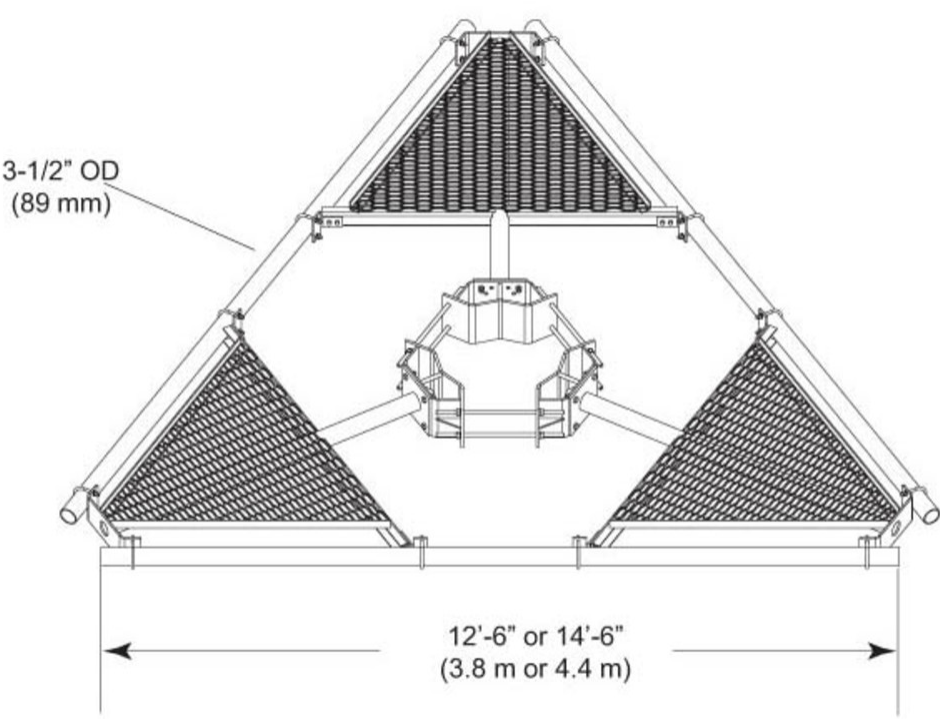
**Mounting** Monopole, 304.8–1270 mm (12–50 in) OD  
**Pipe, quantity** 12  
**Sectors, quantity** 3

## Dimensions

**Height** 3,200.4 mm | 126 in  
**Face Width** 3.81 m | 12.5 ft  
**Width** 3810 mm | 150 in  
**Length** 1,031.24 mm | 40.6 in  
**Pipe Length** 3,200.4 mm | 126 in  
**Mounting Diameter, maximum** 1270 mm | 50 in  
**Mounting Diameter, minimum** 304.8 mm | 12 in  
**Pipe Outer Diameter** 60.96 mm | 2.4 in

# MC-PK12M-12-126

## Outline Drawing



## Material Specifications

**Material Type** Hot dip galvanized steel

## Mechanical Specifications

**Wind Rating** For Specifications, please contact [steelproducts@commscope.com](mailto:steelproducts@commscope.com) or call 800-255-1479

**Wind Rating Test Method** TIA/EIA-222

## Environmental Specifications

**Man Rating** 250 lb vertical man load at 15 mph (BWS)

## Packaging and Weights

**Included** Pipe mounts | Plain end pipes (12) | Platform | Ring mount

**Packaging quantity** 1

**Weight, net** 707.604 kg | 1560 lb

# MC-PK12M-12-126

---

## Regulatory Compliance/Certifications

Agency	Classification
ISO 9001:2015	Designed, manufactured and/or distributed under this quality management system



### \* Footnotes

Wind Rating	BWS—Base Wind Speed; FBC—Florida Building Code
Man Rating	BWS—Base Wind Speed