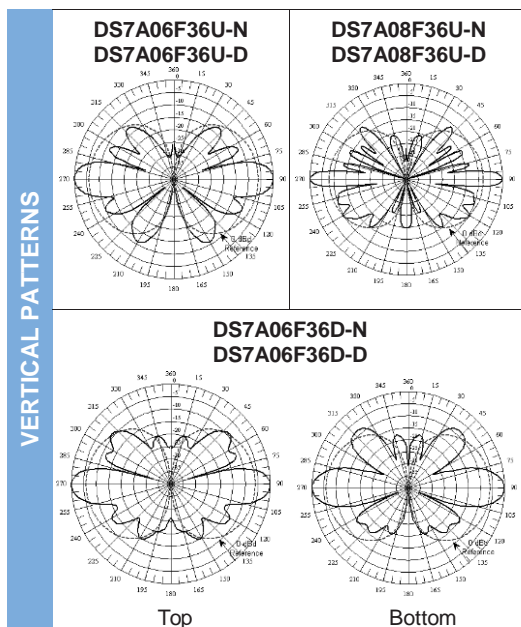


700-800 MHz Broadband Omni Antennas (746-869 MHz)

		746-869 MHz						746-869 MHz				
Model Number		DS7A06F36U-N	DS7A06F36U-D	DS7A08F36U-N	DS7A08F36U-D	DS7A06F36D-N	DS7A06F36D-D	DS7A06F36U6N	DS7A06F36U6D	DS7A06F36U3D	DS7A06F36U3N	DS7A06F36T-N
Input Connector		N(F)	7/16 DIN	N(F)	7/16 DIN	N(F)	7/16 DIN	N(F)	7/16 DIN	7/16 DIN	N(F)	N(F)
Type		Single	Single	Single	Single	Dual	Dual	Beamtilt	Beamtilt	Beamtilt	Beamtilt	Triple
ELECTRICAL	Bandwidth, MHz	123	123	123	123	123	123	123	123	123	123	123
	Power, Watts	500	500	500	500	350	350	500	500	500	500	500
	Gain, dBd	6	6	8	8	6	6	6	6	6	6	6
	Horizontal Beamwidth, degrees	360	360	360	360	360	360	360	360	360	360	360
	Vertical Beamwidth, degrees	16	16	10	10	16	16	16	16	16	16	16
	Beam Tilt, degrees	0	0	0	0	0	0	6 Down	6 Down	3 Down	3 Down	0
	Isolation (minimum), dB	N/A	N/A	N/A	N/A	35	35	N/A	N/A	N/A	N/A	N/A
MECHANICAL	Number of Connectors	1	1	1	1	2	2	1	1	1	1	3
	Flat Plate Area, ft ²	1.09	1.09	1.81	1.81	1.89	1.89	1.09	1.09	1.09	1.09	3.44
	Lateral Windload Thrust, lbf	46	46	76	76	79	79	46	46	46	46	145
	Rated Wind Speed (mph), without ice	250	250	190	190	190	190	250	250	250	250	150
	Mounting Hardware included	DSH2V3R	DSH2V3R	DSH3V3R	DSH3V3R	DSH3V3R	DSH3V3R	DSH2V3R	DSH2V3R	DSH2V3R	DSH2V3R	DSH3V3N
DIMENSIONS	Length, ft(m)	6.6 (2.1)	6.6 (2.1)	10.9 (3.3)	10.9 (3.3)	11.4 (3.5)	11.4 (3.5)	6.6 (2.1)	6.6 (2.1)	6.6(2.1)	6.6(2.1)	20.8 (6.4)
	Radome O.D., in(cm)	3 (7.6)	3 (7.6)	3 (7.6)	3 (7.6)	3 (7.6)	3 (7.6)	3 (7.6)	3 (7.6)	3 (7.6)	3 (7.6)	3 (7.6)
	Mast O.D., in(cm)	2.5 (6.4)	2.5 (6.4)	2.5 (6.4)	2.5 (6.4)	2.5 (6.4)	2.5 (6.4)	2.5 (6.4)	2.5 (6.4)	2.5 (6.4)	2.5 (6.4)	2.5 (6.4)
	Net Weight w/o bracket, lb(kg)	19 (8.6)	19 (8.6)	29 (13.2)	29 (13.2)	31 (14.1)	31 (14.1)	19 (8.6)	19 (8.6)	19 (8.6)	19 (8.6)	39 (17.7)
	Shipping Weight, lb(kg)	39 (17.7)	39 (17.7)	59 (26.8)	59 (26.8)	61 (27.7)	61 (27.7)	39 (17.7)	39 (17.7)	39 (17.7)	39 (17.7)	97 (44)



700-800 MHz Broadband Omni Antennas (764-869 MHz)

		764-869 MHz						764-806 MHz		794-824 MHz		764-869 MHz	
Model Number		DS7C09F36U-N	DS7C09F36U-D	DS7C10F36U-N	DS7C10F36U-D	DS7C10F36U3N	DS7C10F36U3D	DS7B12F36U-N	DS7B12F36U-D	DS7E12F36U-N	DS7E12F36U-D	DS7C10F36U6D	DS7C10F36U6N
Input Connector		N(F)	7/16 DIN	N(F)	7/16 DIN	N(F)	7/16 DIN	N(F)	7/16 DIN	N(F)	7/16 DIN	7/16 DIN	N(F)
Type		Single		Single		Beamtilt		Single		Single		Beamtilt	
ELECTRICAL	Bandwidth, MHz	105		105		105		42		30		105	
	Power, Watts	500		500		500		500		500		500	
	Gain, dBd	9		10		10		12		12		10	
	Horizontal Beamwidth, degrees	360		360		360		360		360		360	
	Vertical Beamwidth, degrees	8		6		6		3		3		6	
	Beam Tilt, degrees	0		0		3 Down		0		0		6 Down	
	Isolation (minimum), dB	N/A		N/A		N/A		N/A		N/A		N/A	
	Number of Connectors	1		1		1		1		1		1	
	Flat Plate Area, ft ²	2.38		2.38		2.38		3.97		3.97		2.38	
MECHANICAL	Lateral Windload Thrust, lbf	100		100		100		167		167		100	
	Rated Wind Speed (mph), without ice	175		175		175		150		150		175	
	Mounting Hardware included	DSH3V3N		DSH3V3N		DSH3V3N		DSH3V3N		DSH3V3N		DSH3V3N	
	Length, ft(m)	14.4 (4.4)		14.4 (4.4)		14.4 (4.4)		24.0 (7.3)		24.0 (7.3)		14.4 (4.4)	
DIMENSIONS	Radome O.D., in(cm)	3 (7.6)		3 (7.6)		3 (7.6)		3 (7.6)		3 (7.6)		3 (7.6)	
	Mast O.D., in(cm)	2.5 (6.4)		2.5 (6.4)		2.5 (6.4)		2.5 (6.4)		2.5 (6.4)		2.5 (6.4)	
	Net Weight w/o bracket, lb(kg)	41 (18.6)		41 (18.6)		41 (18.6)		70 (31.8)		70 (31.8)		41 (18.6)	
	Shipping Weight, lb(kg)	71 (32.2)		71 (32.2)		71 (32.2)		100 (45.4)		100 (45.4)		71 (32.2)	

