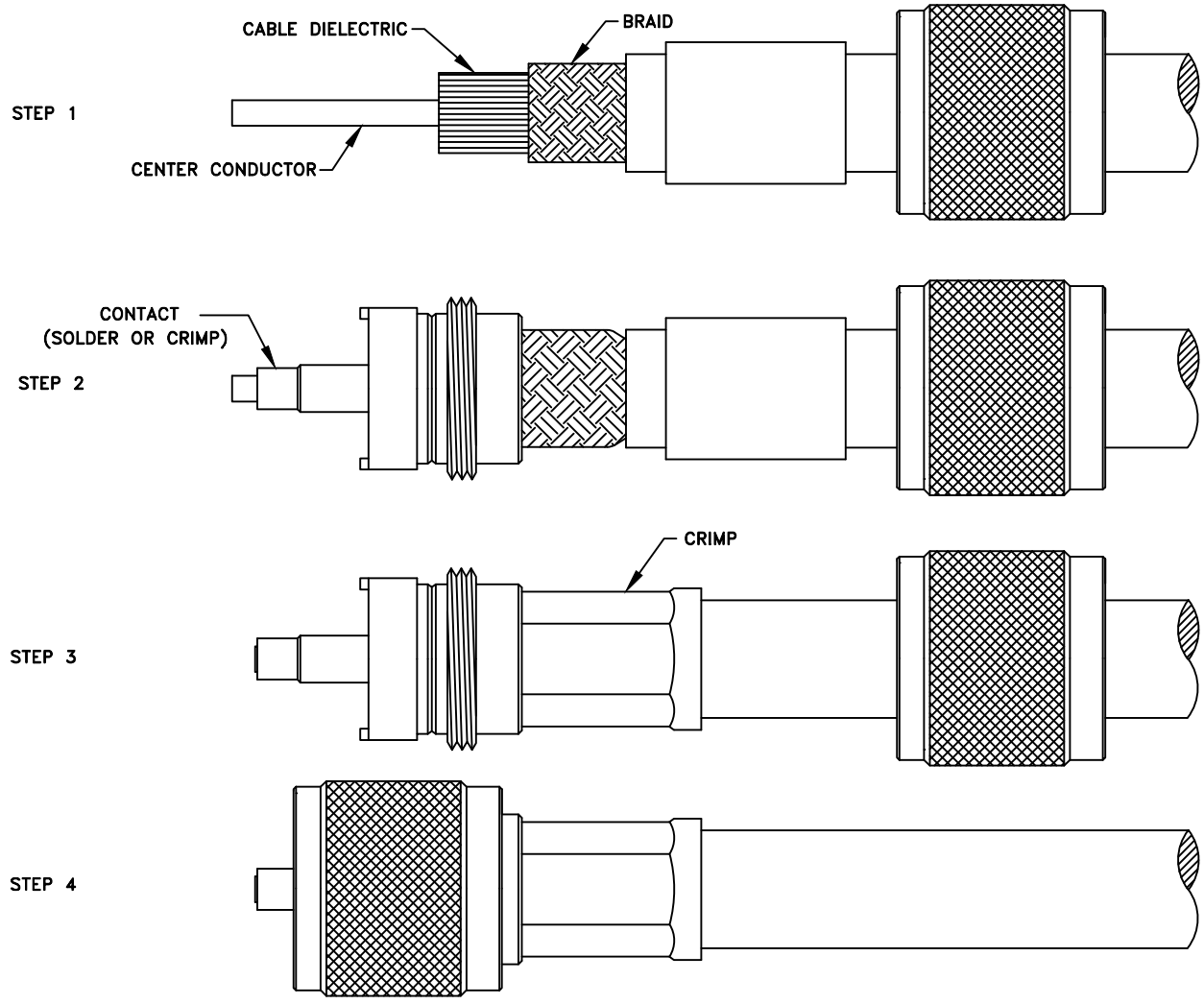
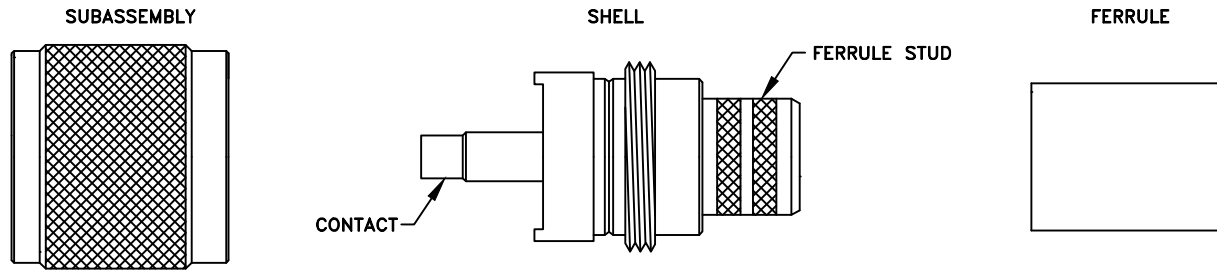


CABLE ASSEMBLY INSTRUCTIONS

RFU-507-SI



Step 1: Cut end of cable evenly. Strip cable to dimensions shown in catalog or on outline drawing. All cuts are to be clean and square. Do not nick braid or center conductor when cutting. Slide shell & ferrule over cable. If using strain relief or heat shrink tubing slide onto cable first.

Step 2: Pre tin cable conductor if using stranded cable (if needed). Slide ferrule stud under braid, while inserting the cable into the subassembly. Solder or crimp contact.

Step 3: Slide the ferrule over the braid until it yields against the back of the connector. Crimp the ferrule with crimp tool as specified on connector drawing. Trim extra braid (if any) extending out of ferrule end.

Step 4: Thread shell over subassembly.

RFU-507-SI AP.DWG

RF CONNECTORS

06/06/06

7610 Miramar Road, San Diego, CA 92126-4202 - (858) 549-6340
 (800) 233-1728 - Fax (858) 549-6345 E-mail: rfi@rfindustries.com - www.rfindustries.com

CZ