

PM-SU4-B

Universal Sliding Pipe Mount Base Kit for 4-1/2 in OD pipe



Product Classification

Product Type Pipe mount

Dimensions

Mounting Diameter, maximum	203.2 mm 8 in
Mounting Diameter, minimum	0.0 mm 0 in
Pipe Outer Diameter	114.3 mm 4 1/2 in
Height	127.0 mm 5.0 in
Length	304.8 mm 12.0 in
Weight	36.8 kg 81.1 lb
Width	304.8 mm 12.0 in

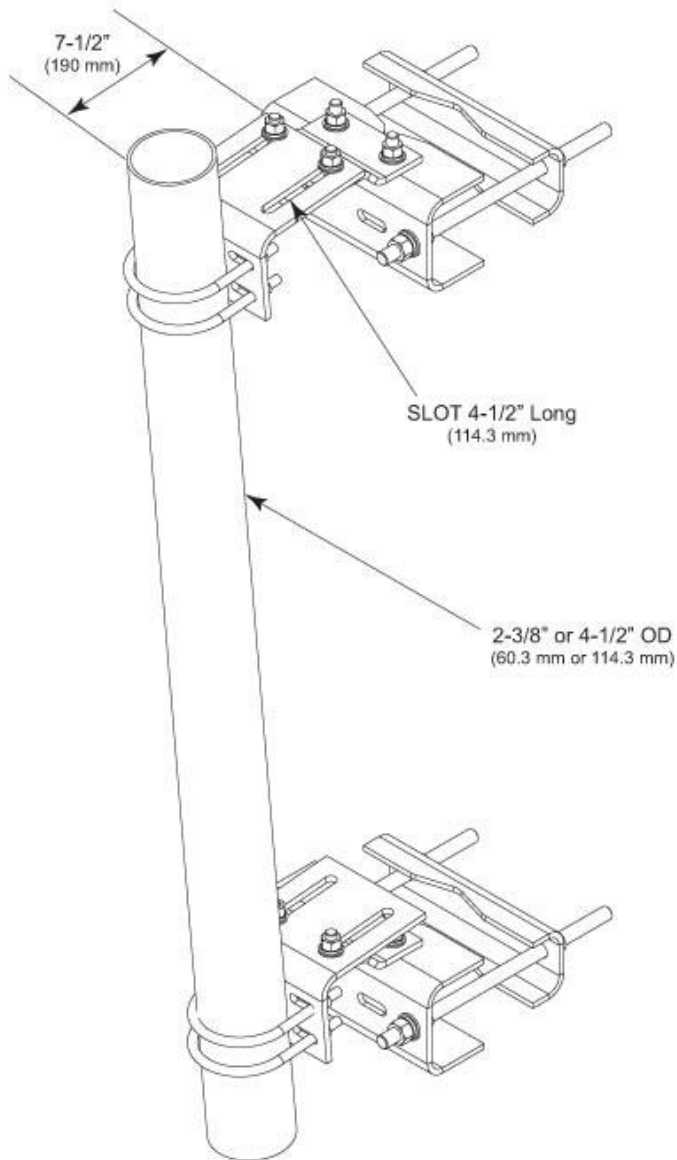
Environmental Specifications

Wind Rating	120 mph (BWS) at 150 ft AGL
Wind Rating Test Method	TIA/EIA-222

General Specifications

Pipe, quantity	0
Tower Taper	Tapered
Includes	Sliding pipe mount brackets Universal saddle mount
Material Type	Hot dip galvanized steel
Mounting	Angle 60°, 203.2 mm (8 in) Angle 90°, 152.4 mm (6 in) Straight or tapered legs up to 203.2 mm (8 in) OD
Note	One 96 in x 8 in panel antenna per sector
Package Quantity	2

Outline Drawing



Regulatory Compliance/Certifications

Agency	Classification
--------	----------------

PM-SU4-B

ISO 9001:2015 Designed, manufactured and/or distributed under this quality management system



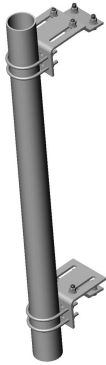
Included Products

PM-SL4 — Universal Taper Pipe Mount Slider Bracket for 4-1/2 in OD pipe

SM-U2080 — Universal Saddle Mount for straight or tapered legs up to 8 in OD, 8 in angle 60°, or 6 in angle 90°

* Footnotes

Wind Rating BWS—Base Wind Speed; FBC—Florida Building Code



Universal Taper Pipe Mount Slider Bracket for 4-1/2 in OD pipe

Product Classification

Product Type Pipe mount

Dimensions

Pipe Outer Diameter 114.3 mm | 4 1/2 in
Height 127.0 mm | 5.0 in
Length 304.8 mm | 12.0 in
Weight 14.2 kg | 31.3 lb
Width 152.4 mm | 6.0 in

Environmental Specifications

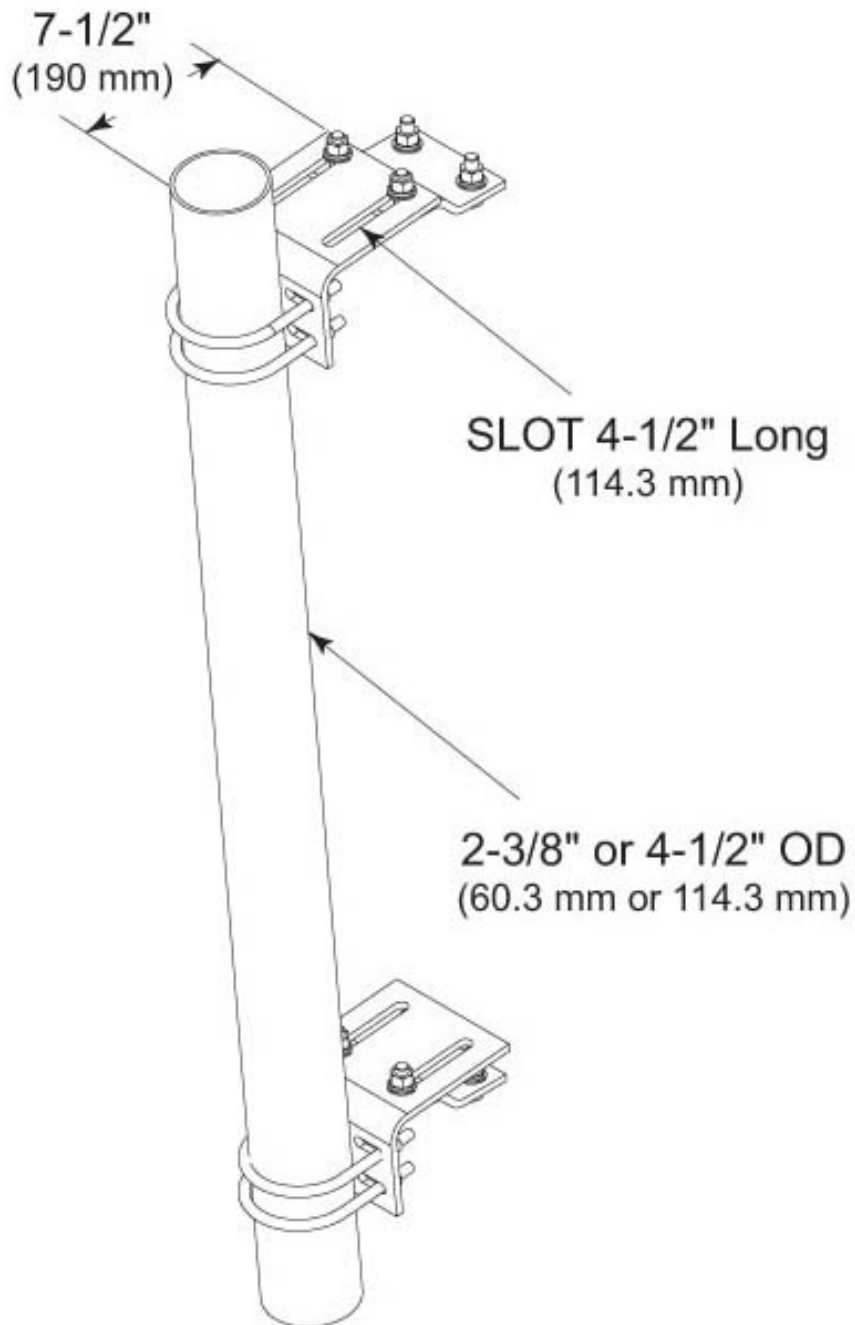
Wind Rating 120 mph (BWS) at 150 ft AGL
Wind Rating Test Method TIA/EIA-222

General Specifications

Pipe, quantity 0
Tower Taper Tapered
Includes Hardware | Sliding pipe mount brackets
Material Type Hot dip galvanized steel
Mounting Saddle mounts
Note One 96 in x 8 in panel antenna per pipe mount
Package Quantity 2

PM-SL4

Outline Drawing



Regulatory Compliance/Certifications

PM-SL4

Agency

ISO 9001:2015

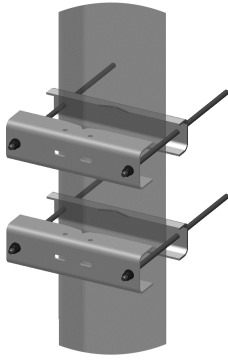
Classification

Designed, manufactured and/or distributed under this quality management system

*** Footnotes****Wind Rating**

BWS—Base Wind Speed; FBC—Florida Building Code

SM-U2080



Universal Saddle Mount for straight or tapered legs up to 8 in OD, 8 in angle 60°, or 6 in angle 90°

Product Classification

Product Type Saddle mount

Dimensions

Height 152.4 mm | 6.0 in
Length 254.0 mm | 10.0 in
Mounting Diameter, maximum 203.2 mm | 8 in
Mounting Diameter, minimum 0.0 mm | 0 in
Weight 22.7 kg | 50.0 lb
Width 279.4 mm | 11.0 in

General Specifications

Includes Mount
Material Type Hot dip galvanized steel
Mounting Angle 60°, 203.2 mm (8 in) | Angle 90°, 152.4 mm (6 in) | Straight or tapered legs up to 203.2 mm (8 in) OD
Package Quantity 2
Tower Taper Non-tapered

Regulatory Compliance/Certifications

Agency ISO 9001:2015
Classification Designed, manufactured and/or distributed under this quality management system

