



FlexTwist™ Flexible Twist for WR90, 8.2–12.4 GHz, with interface types CPR90G and CPR90G, 1200 mm

Product Classification

Brand	FlexTwist™
Product Type	Rectangular waveguide, flexible twist

Electrical Specifications

Operating Frequency Band	8.2 – 12.4 GHz
Attenuation	0.13 dB/ft 0.43 dB/m
Average Power	960 W
Peak Power	180.0 kW
VSWR	1.13

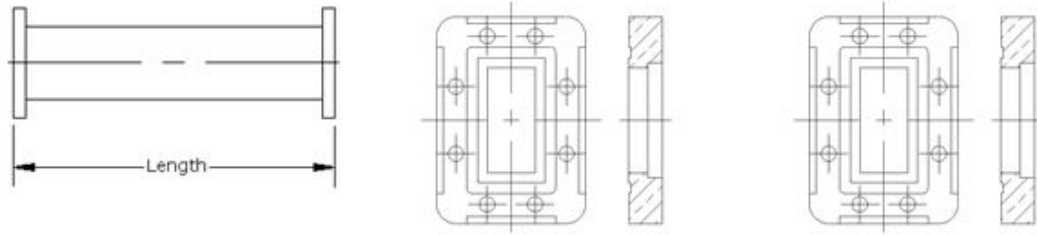
General Specifications

Component	Flexible Twist
Waveguide Size	WR90 WG16 R100
Interface	CPR90G
Interface 2	CPR90G
Length	1200 mm 47 in

Mechanical Specifications

Maximum Twist	310.00 °/m 95.00 °/ft
Minimum Bend Radius, Multiple Bends (E Plane)	64.00 mm 2.50 in
Minimum Bend Radius, Multiple Bends (H Plane)	127.00 mm 5.00 in
Pressurization, maximum	45 psi 310 kPa

Component	Interface	Interface 2
-----------	-----------	-------------



Regulatory Compliance/Certifications

Agency

RoHS 2011/65/EU

ISO 9001:2015

China RoHS SJ/T 11364-2014

Classification

Compliant by Exemption

Designed, manufactured and/or distributed under this quality management system

Above Maximum Concentration Value (MCV)

