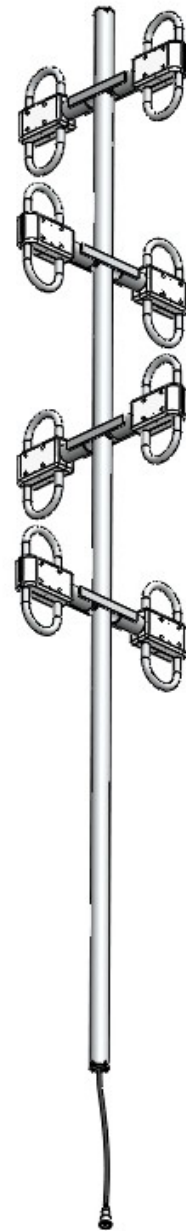




## UHF Omni Exposed Dipole Antenna

Electrical Specifications	
Frequency Range	400-520 MHz
Gain	6 dBd
VSWR (Return Loss)	<1.5:1 (14 dB)
Passive IM 3 <sup>rd</sup> Order (2x20W)	-150 dBc
Peak Instantaneous Power (PIP)	25 kW
Power Input	500 W
Vertical Beamwidth	16°
Horizontal Beamwidth	Omni +/-0.5 dB
Input	7-16 DIN-Female D7 4.3-10 DIN-Female D4

Mechanical Specifications	
Configuration	8 Dipoles (4 Bays) Turnstile stacked Dual section support
Length	118"
Weight	18 lbs
Shipping Weight	lbs
Shipping Dimensions	L 124" W 19" H 19"
Projected Area	1.9 ft <sup>2</sup> (no ice) 2.0 ft <sup>2</sup> (with ice)
Lateral Thrust @ 100mph	76 lbs
Mounting Area	20.0" x 1.9" diam. Aluminum
Suggested Clamps (not included)	PLMTKIT
Wind Gust Rating	150 mph



**Standard Elevation Pattern**

