



ANT450F6

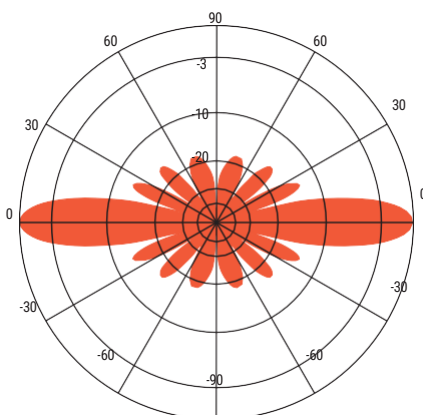
FIBERGLASS COLLINEAR ANTENNA 6 dBd

The Telewave.io ANT450F6 is an extremely rugged, medium-gain, fiberglass collinear antenna, designed for operation in all environmental conditions. The antenna is constructed with brass and copper elements, connected at DC ground potential for lightning impulse protection.

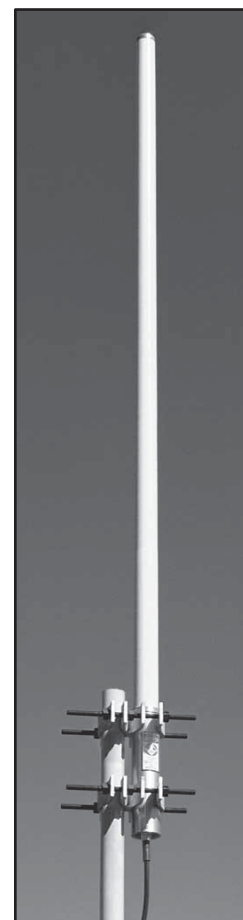
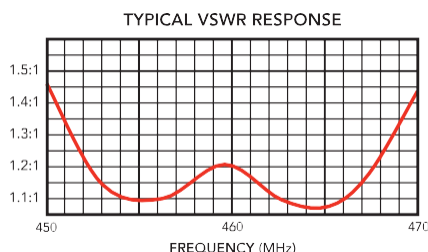
All junctions are fully soldered to prevent RF intermodulation, and each antenna is completely protected within a rugged, high-tech radome to ensure survivability in the worst environments. The "Cool Blue" radome provides maximum protection from corrosive gases, ultraviolet radiation, icing, salt spray, acid rain, and wind-blown abrasives.

The ANT450F6 includes an ANTC482 dual clamp set for mounting to a 1.5" to 3.5" O.D. support pipe. Stand-off and top mounts are also available.

Any sub model can be ordered as an inverted antenna.



ANT450F6 - 460 MHz
Vertical Plane Gain =
6.32 dBd



SPECIFICATIONS

Frequency Range (Continuous)	445-480 MHz	Temperature Range (Operating or Storage)	-58° to +140° -50° to +60°
Gain	6 dBd	Wind rating / with 0.5" ice (MPH)	150/ 225
Power Rating (RMS Continuous)	500 watts / 57 dBm	Maximum exposed area (sq.ft)	1.5 ft. ²
Passive Intermodulation (PIM) Rating	N/A	Lateral Thrust experienced by the antenna 100 (lb)	60
Peak Instantaneous Power (PIP) Rating	N/A	Bending Moment transfer to top clamp 100 MPH (lb-ft)	143 ft.lb
Beam width Vertical / Horizontal	18° / 360°	Ferrule Dimension Inches (H" x D")	11.5
Supported Polarization	Vertical	Radome Dimensions Inches (H" x D")	91
Vertical Beam Tilt (from horizon)	0°	Total Length Inches (H")	97
RF Impedance	50 Ohms	Installed Weight Lbs (Antenna + Default Clamp)	18
DC Impedance	Open	Antenna Shipping Mode (Freight/UPS/FedEx/etc.)	Yes
Input VSWR / Return Loss (Minimum)	1.5:1 / 14 dB	Shipping Weight = tube + ant + default clamp kit (lbs)	21 (9.53 Kg)
Coastal / Salt Air Suitable	Yes	Shipping Box Dimensions (L" x W") (Round Tube)	101 x 4

ANTC485

Clamp Kit for Radome Antennas: F0 & F2

WARNING

For your safety: do not install any antenna near power lines, carefully follow all installation instructions, and use safety devices when climbing. Ensure that the tower structure is properly and safely grounded.

If the antenna falls toward or contacts any overhead wires, IMMEDIATELY LET GO and stay away. Contact the utility company for assistance.

Consult a qualified structural engineer to verify that the tower and all mounting hardware are sufficient to support the antenna and RF cables.

Antenna mounting clamps must be properly installed and spaced to prevent antenna rotation from wind loading. Every installation is unique.

MOUNTING INSTRUCTIONS

1. Apply anti-seize compound to the threaded rod ends. Insert rods through dual clamps with hex nuts and lock washers in the middle of the clamps. Mount both clamps to the support structure with the two single clamp plates, hex nuts, and lock washers. Arrange clamps so that 1"-2" of the ferrule is exposed above and below the clamps. Be sure to allow sufficient thread length on the antenna side of the clamps.
2. Attach the antenna clamp plate to the upper clamp set only, allowing maximum plate movement on the rods. Feed the ferrule down through the clamp until aligned with the upper attachment point. Partially tighten the hex nuts and straighten the antenna until the antenna is vertical.
3. Attach and secure the lower antenna clamp with the supplied hex nuts and lock washers and tighten both clamps until the lock washers are flat. Then perform an additional half turn on each nut.
4. Connect RF feed cable terminated with Type-N or 7-16 DIN as required to antenna input connector. Secure all cables with UV-Resistant cable ties.
5. Seal the input connector with waterproof tape or other sealing material. Connector sealing instructions can be found at www.telewave.com.



ANTC485 Clamp Kit

- (2) Clamp Plates
- (2) 3/8"-16 Stainless U-Bolts
- (4) Hex Nuts
- (4) Lock Washers
- (1) Tube of Anti-Seize Compound



ANTC485 Typical Installation

SPECIFICATIONS

Shipping Dimensions	Variable sized padded pack
Clamp Weight (lb)	2.25
Shipping Weight (lb)	3