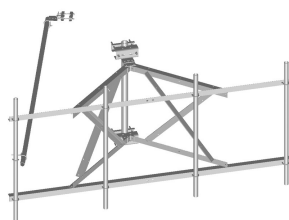


SF-SU12-B



Stand-Off Sector Frame, 12 ft face

Product Classification

Product Type Tower sector frame

General Specifications

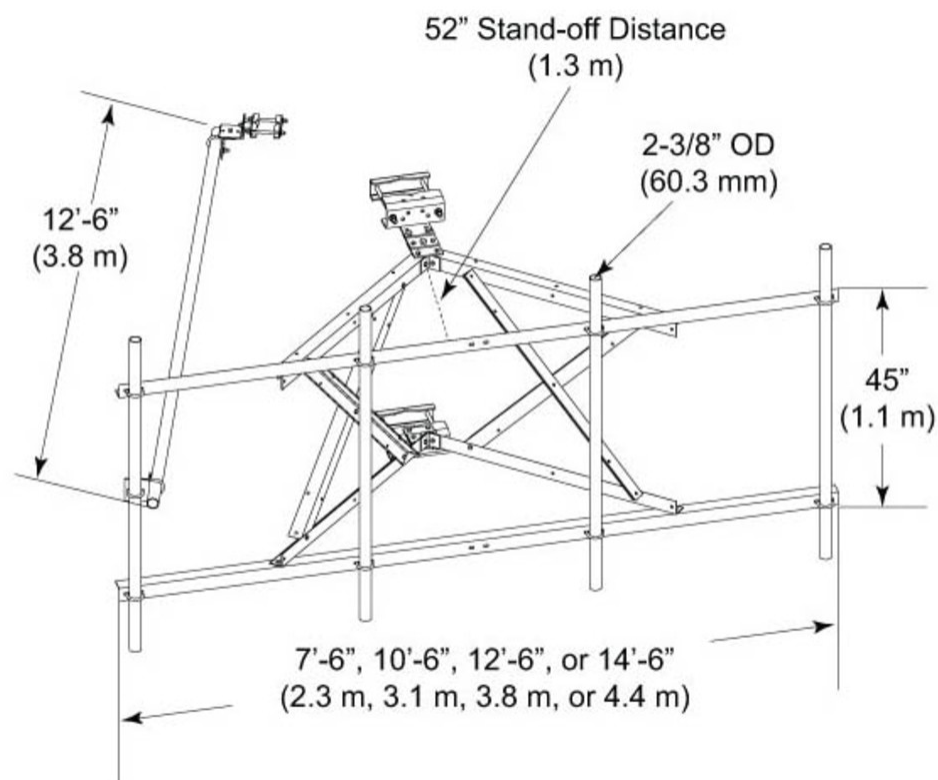
Mounting	Angle 60°, 203.2 mm (8 in) Angle 90°, 152.4 mm (6 in) Straight or tapered legs up to 203.2 mm (8 in) OD
Note	Four 72 in x 8 in panel antennas per sector
Pipe, quantity	0
Tower Taper	Non-tapered Tapered

Dimensions

Height	1143 mm 45 in
Face Width	3.81 m 12.5 ft
Width	3810 mm 150 in
Length	1,320.8 mm 52 in
Mounting Diameter, maximum	203.2 mm 8 in
Mounting Diameter, minimum	0 mm 0 in
Pipe Outer Diameter	60.96 mm 2.4 in
Stand-off Distance	1,320.8 mm 52 in

SF-SU12-B

Outline Drawing



Material Specifications

Material Type Hot dip galvanized steel

Mechanical Specifications

Wind Rating 120 mph (BWS) at 150 ft AGL | 140 mph (3-second gust) at 150 ft AGL using Exposure D per FBC

Wind Rating Test Method TIA/EIA-222

Environmental Specifications

EPA with 1/2 in (12 mm) radial ice 2.193 m² | 23.6 ft²

EPA without ice 1.691 m² | 18.2 ft²

Man Rating 250 lb vertical man load at 15 mph (BWS)

SF-SU12-B

Packaging and Weights

Included	Clamps Frame Saddle mounts Stiff arm
Packaging quantity	1
Weight, net	166.922 kg 368 lb

Regulatory Compliance/Certifications

Agency	Classification
CHINA-ROHS	Below maximum concentration value
ISO 9001:2015	Designed, manufactured and/or distributed under this quality management system
REACH-SVHC	Compliant as per SVHC revision on www.commscope.com/ProductCompliance
ROHS	Compliant



Included Products

SM-U2080	– Universal Saddle Mount for straight or tapered legs up to 8 in OD, 8 in angle 60°, or 6 in angle 90°
----------	--

* Footnotes

Wind Rating	BWS—Base Wind Speed; FBC—Florida Building Code
EPA with 1/2 in (12 mm) radial ice	EPA—Effective Projected Area
EPA without ice	EPA—Effective Projected Area
Man Rating	BWS—Base Wind Speed