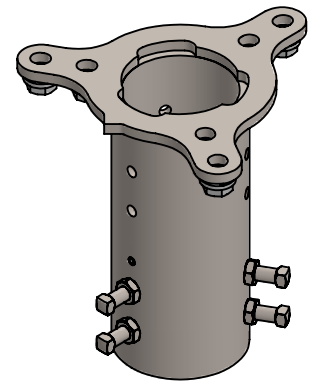
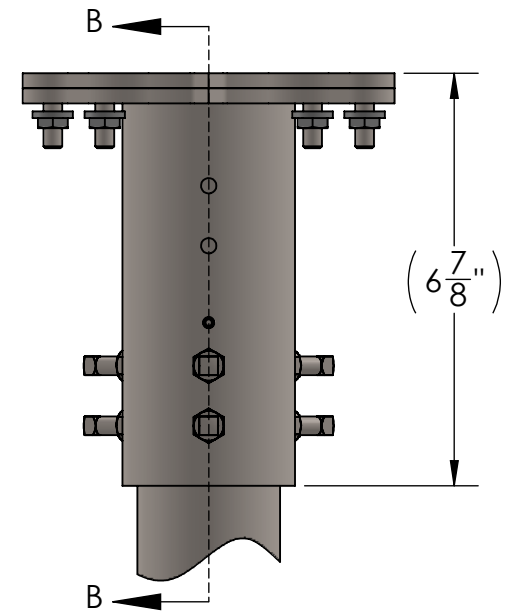
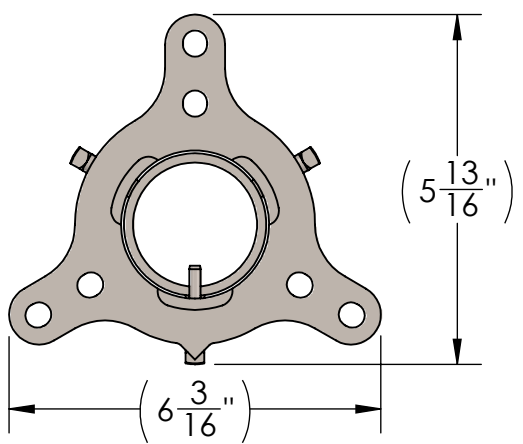


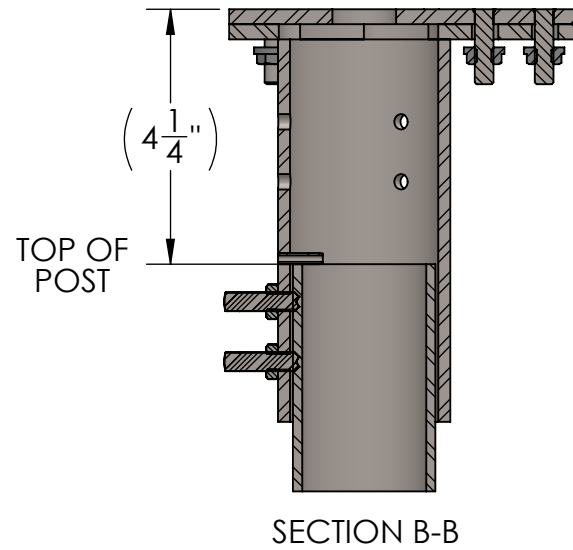
**CUTSHEET**



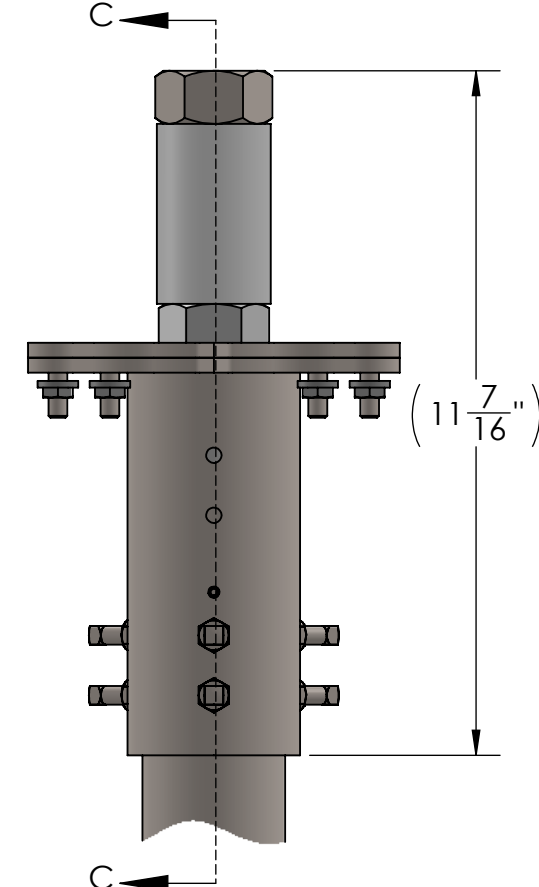
SCALE 1 : 4



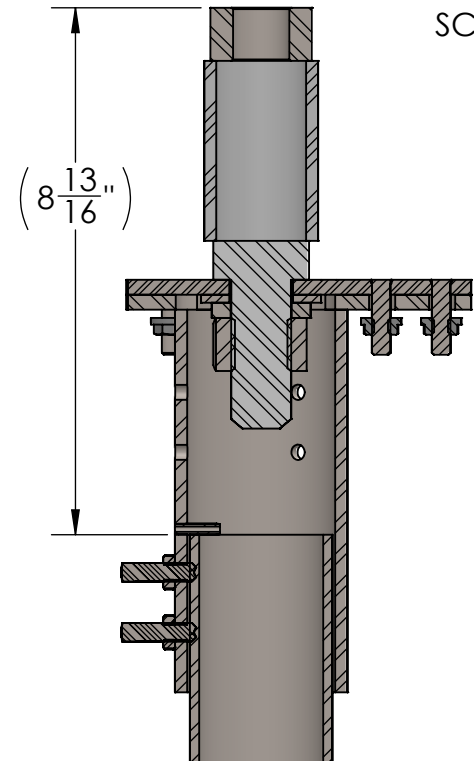
KATHREIN LOW PORT COUNT  
COMMSCOPE  
JMA  
ACE  
GAMMA NU 10 PORT  
DKK  
KMW



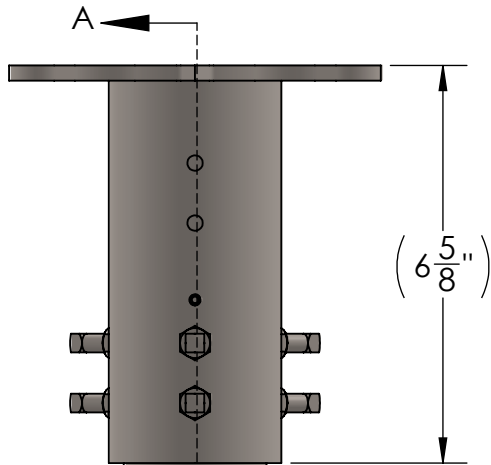
SECTION B-B



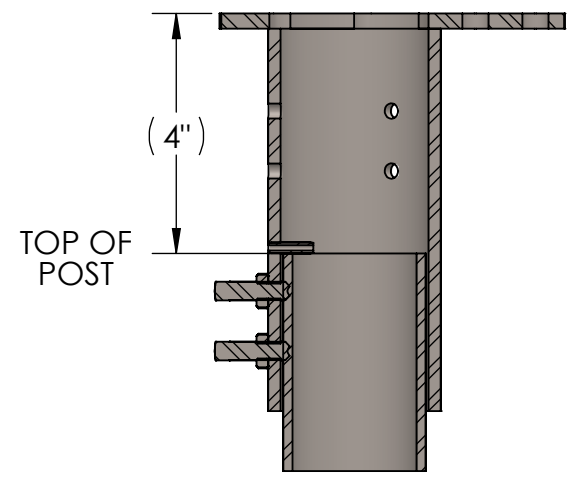
GALTRONICS  
KATHREIN 20/24 PORT



SECTION C-C



AMPHENOL  
CCI  
GAMMA NU 12 PORT  
Ø 2" NOM (2.375" O.D.)  
MOUNTING POST  
(NOT SUPPLIED)



SECTION A-A

PART NUMBER	COLOR
900192-1	BLACK
900192-2	BROWN
900192-3	GRAY
900192-4	SILVER

**ConcealFab**  
Corporation

10205 FEDERAL DRIVE  
COLORADO SPRINGS, CO 80908  
PH: 719-599-3400 FX: 719-599-0057  
SALES@CONCEALFAB.COM

**PROPRIETARY INFORMATION**  
USE, REPRODUCTION, OR DISCLOSURE  
IS SUBJECT TO RESTRICTIONS SET FORTH  
IN NON-DISCLOSURE AGREEMENTS AND  
PERTINENT CONTRACTUAL DOCUMENTS.  
© 2017 ConcealFab Corp - All Rights Reserved

**DO NOT SCALE DWG**

DIMENSIONS ARE IN INCHES

MODELED BY:	ALB	DATE:	07/23/18
DRAWN BY:	ALB	DATE:	04/24/20
CHECKED BY:	JAM	DATE:	04/24/20

TITLE:  
**CANTENNA SLEEVE,  
UNIVERSAL**

SCALE: 5:16 SHEET SIZE: B SHEET: 1 OF 1

SALES NUMBER:  
**900192-F**

APPROX. WEIGHT (INCLUDES SLEEVE AND HARDWARE NOT SHOWN) (W/OUT EQUIPMENT)	4.49 LBS
--	----------

NOTES:  
1. STAINLESS STEEL HARDWARE SHALL HAVE ANTISEIZE LUBRICANT APPLIED BEFORE ASSEMBLY.