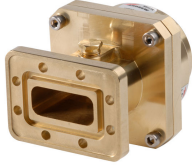


277SEM

Fixed-tuned PDR70 for elliptical waveguide 77



Product Classification

Product Type Elliptical waveguide connector

General Specifications

Attachment Method Tab-flare | Tool-flare
Body Style Straight, fixed-tuned
Inner Contact Plating Unplated
Interface PDR70
Outer Contact Plating Unplated
Pressurizable Yes

Dimensions

Width 3.48 in | 88.392 mm
Length 4.43 in | 112.522 mm
Transition Length 2.97 in | 75.438 mm
Waveguide Size WR137 | WG14 | R70

Electrical Specifications

Insertion Loss, typical 0.01 dB
Operating Frequency Band 7.125 – 8.5 GHz
Peak Power at Frequency, maximum 92.00 kW @ 6.00 GHz

Material Specifications

Material Type Brass

Environmental Specifications

277SEM

Operating Temperature -55 °C to +85 °C (-67 °F to +185 °F)

Storage Temperature -55 °C to +85 °C (-67 °F to +185 °F)

Packaging and Weights

Weight, net 1.3 kg | 2.866 lb

Regulatory Compliance/Certifications

Agency

ISO 9001:2015

Classification

Designed, manufactured and/or distributed under this quality management system



* Footnotes

Insertion Loss, typical $0.05\sqrt{\text{freq}}$ (GHz) (not applicable for elliptical waveguide)