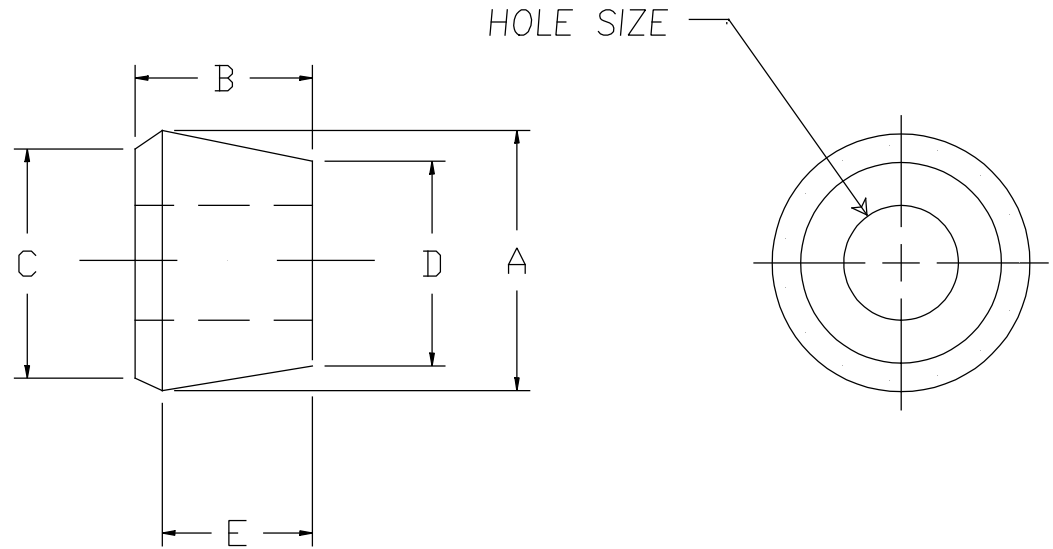


DIMENSIONS

A	1.281	NOMINAL $\pm .015$ *
B	0.875	$\pm .020$ *
C	1.156	$\pm .015$ *
D	1.031	REF.
E	0.750	REF.

PART NUMBER	HOLE SIZE $\pm .010$
SRB-304	.250 *
SRB-305	.312 *
SRB-306	.375 *
SRB-307	.437 *
SRB-308	.500 *
SRB-309	.562 *
SRB-310	.625 *
SRB-311	.688 *
SRB-312	.750 *
SRB-313	.812 *
SRB-314	.875 *
SRB-315	.938 *
SRB-316	.990 *



NOTES:

- 1.) ANGULAR TOLERANCE $\pm 1/2^\circ$
- 2.) FLASH TO BE HELD TO A MINIMUM AND MAY NOT WEBB ACROSS HOLE DIA.
- 3.) ID/OD CONCENTRICITY WITHIN .020

* INDICATES CRITICAL INSPECTION DIMENSIONS

REMKE INDUSTRIES
 Wheeling, Illinois 60090

SCALE: APPROX FULL
 MATERIAL: NEOPRENE 50-60 DUROMETER A
 FINISH: NATURAL BLACK
 PART NAME: BUSHING
 PART NUMBER: SRB-304 THRU SRB-316
 DRAWING DATE: 930204

NEW DRAWING - WAS PART OF DRAWING 771214
 REV A 2-22-94 REMOVE PART SRB-316
 REV B 5/10/00 ADDED TOLERANCES & NOTES
 REV C 9/11/00 ADDED SRB-306-307-308
 REV D 9/25/01 ADDED SRB-316
 REV E 10/11/04 ADDED SRB-304 & 305