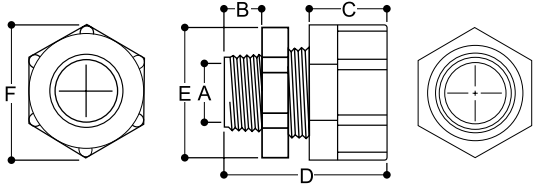


## RSP AND RSPV STRAIGHT CORD GRIPS DIMENSIONS



### SPECIFICATIONS

Conduit Size	A Body Bore	B	C	D	E Body Hex	F Nut
3/8"	0.44	0.49	0.70	1.63	0.94	0.94
1/2"	0.57	0.50	0.88	2.01	1.12	1.25
3/4"	0.76	0.56	0.88	2.10	1.38	1.50

Dimension A is the minimum Body Bore. Other dimensions are nominal.

Dimension D is with the Nut snug but bushing uncompressed.

Dimension E is across the Straight Body hex. flats. Dimension F is across Nut hex. flats.

Dimensions are approximate.